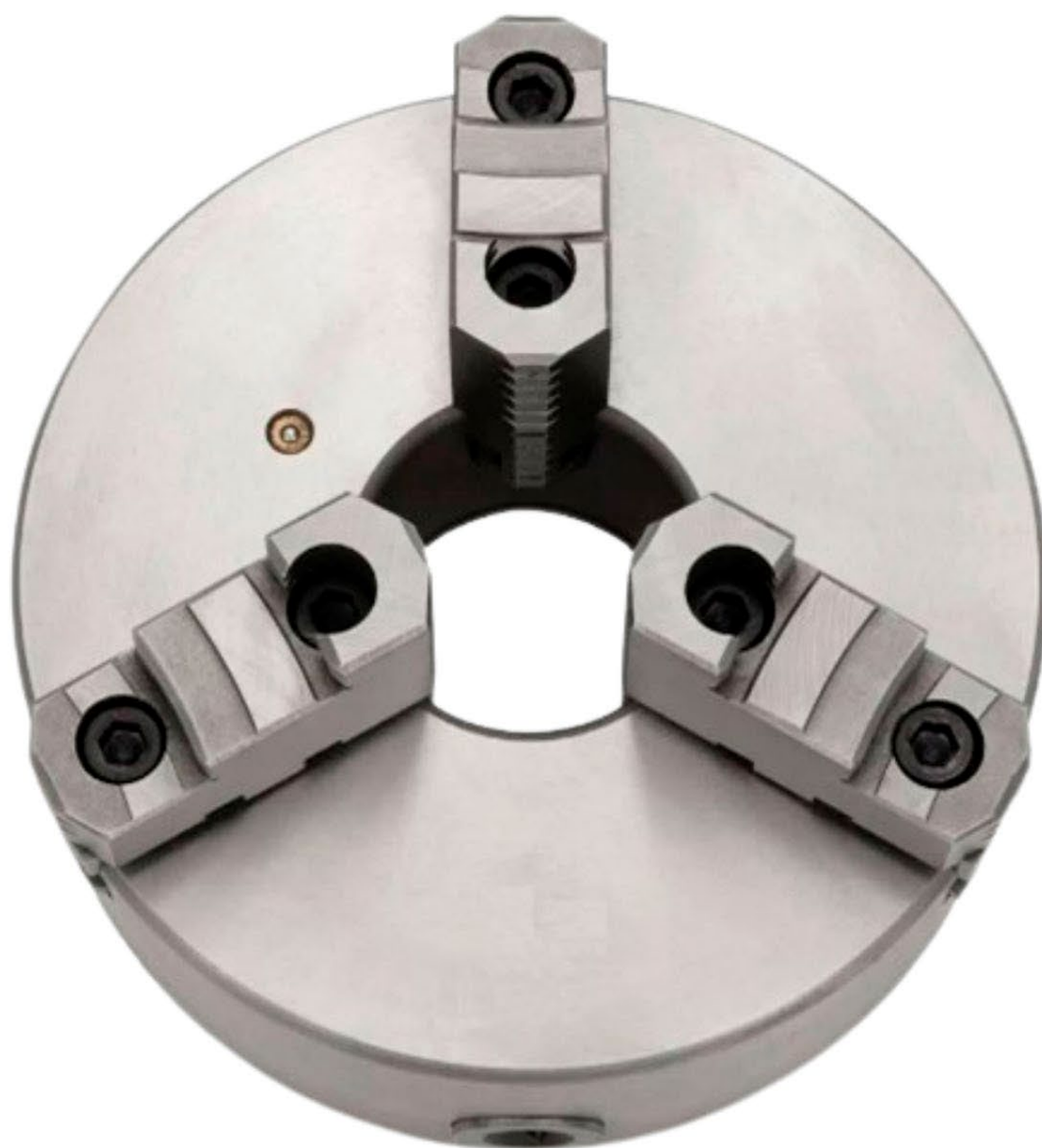


FERMEC[®]

SHARPCUT[®]
TECHNOLOGIES



**CATÁLOGO
PLACAS
PARA TORNO
E FLANGES**

ÍNDICE

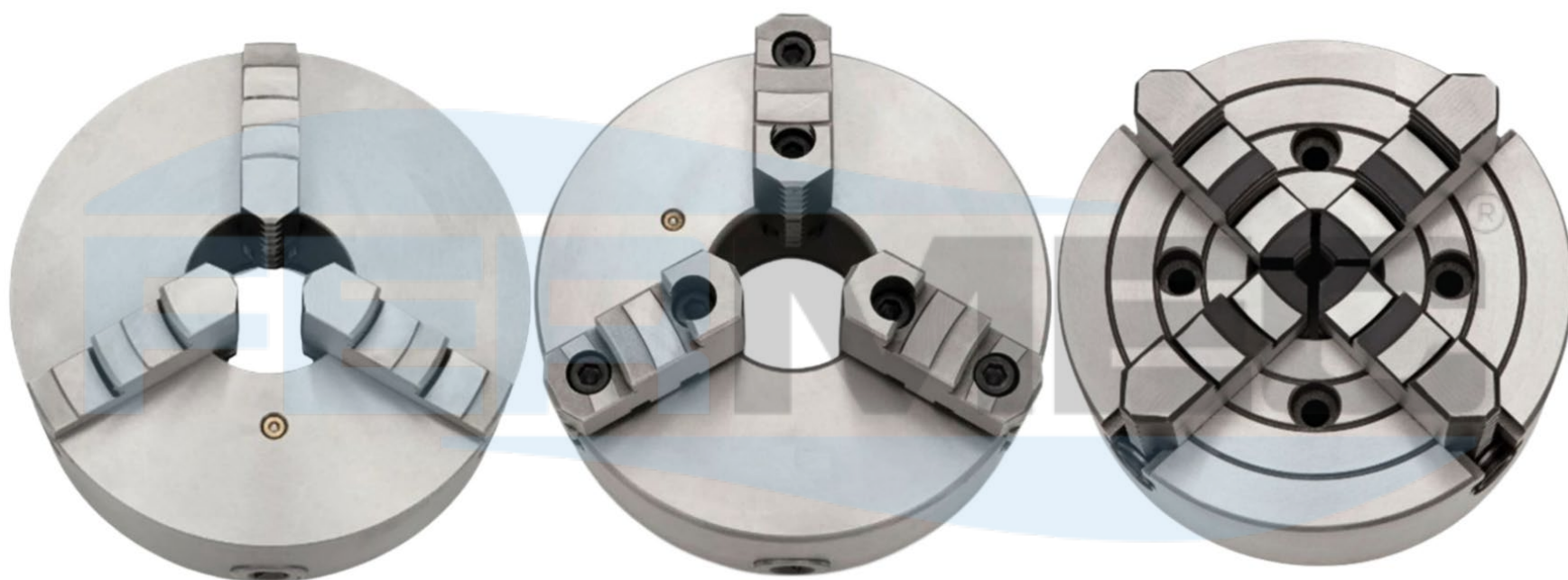


PLACA AUTOCENTRANTE COM 3 CASTANHAS MONOBLOCO - FIXAÇÃO TRASEIRA	04
PLACA AUTOCENTRANTE COM 3 CASTANHAS MONOBLOCO - FIXAÇÃO FRONTAL.....	05
PLACA AUTOCENTRANTE COM 3 CASTANHAS MONOBLOCO - CORPO DE AÇO	06
PLACA AUTOCENTRANTE COM 3 CASTANHAS MONOBLOCO - HASTE CÔNICA.....	07
PLACA AUTOCENTRANTE COM 3 CASTANHAS REVERSÍVEIS - FIXAÇÃO TRASEIRA.....	08
PLACA AUTOCENTRANTE COM 3 CASTANHAS REVERSÍVEIS - FIXAÇÃO FRONTAL.....	09
PLACA AUTOCENTRANTE COM 3 CASTANHAS REVERSÍVEIS - CORPO DE AÇO	10
PLACA DE 3 CASTANHAS REVERSÍVEIS COM FLANGE INCORPORADA.....	11
PLACA VERTICAL DE 3 CASTANHAS	12



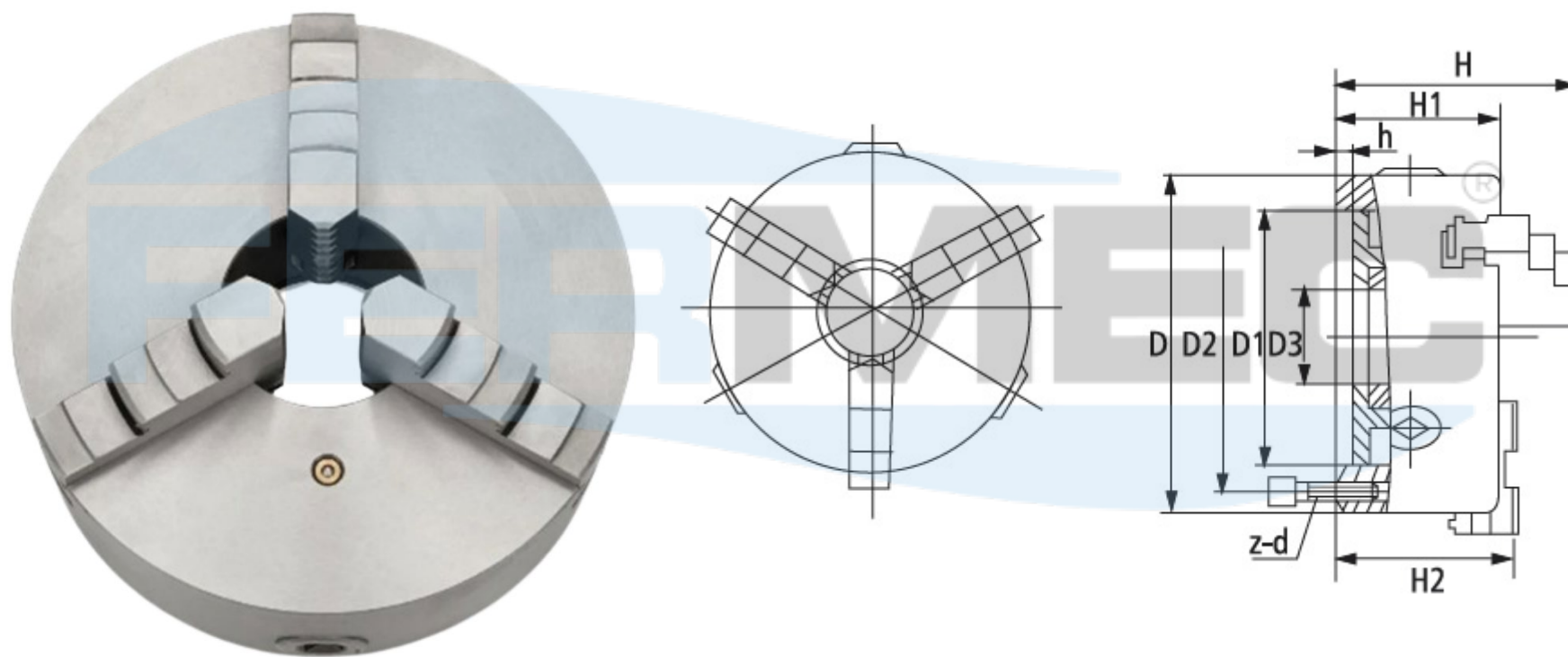
PLACA AUTOCENTRANTE COM 4 CASTANHAS MONOBLOCO - FIXAÇÃO TRASEIRA	13
PLACA INDEPENDENTE COM 4 CASTANHAS MONOBLOCO	14
PLACA AUTOCENTRANTE COM 4 CASTANHAS REVERSÍVEIS - FIXAÇÃO TRASEIRA.....	15
PLACA QUADRADA FIXA DE 4 CASTANHAS	16
PLACA COM 6 CASTANHAS	17
TABELA DE FIXAÇÃO.....	18
CASTANHAS PARA PLACAS	19
DIMENSÕES DAS CASTANHAS JCE CHT	20
DIMENSÕES DAS CASTANHAS JCI CHT.....	21
DIMENSÕES DAS CASTANHAS JCB CHT	22
DIMENSÕES DAS CASTANHAS JCS CHT	23
DIMENSÕES DAS CASTANHAS JCM CHT.....	24
DIMENSÕES DAS CASTANHAS JC CHT.....	25
CASTANHAS MOLES (2 FUROS)	26

FLANGE CONE CURTO - ASA B - 5.9	27
FLANGE CONE LARGO - ASA B - 5.9	28
FLANGE CAMLOCK - ASA B - 5.9	29
FLANGE PROMECA IM 500 / IL 1100	31
FLANGE BRUTA	32



PLACA AUTOCENTRANTE COM 3 CASTANHAS MONOBLOCO

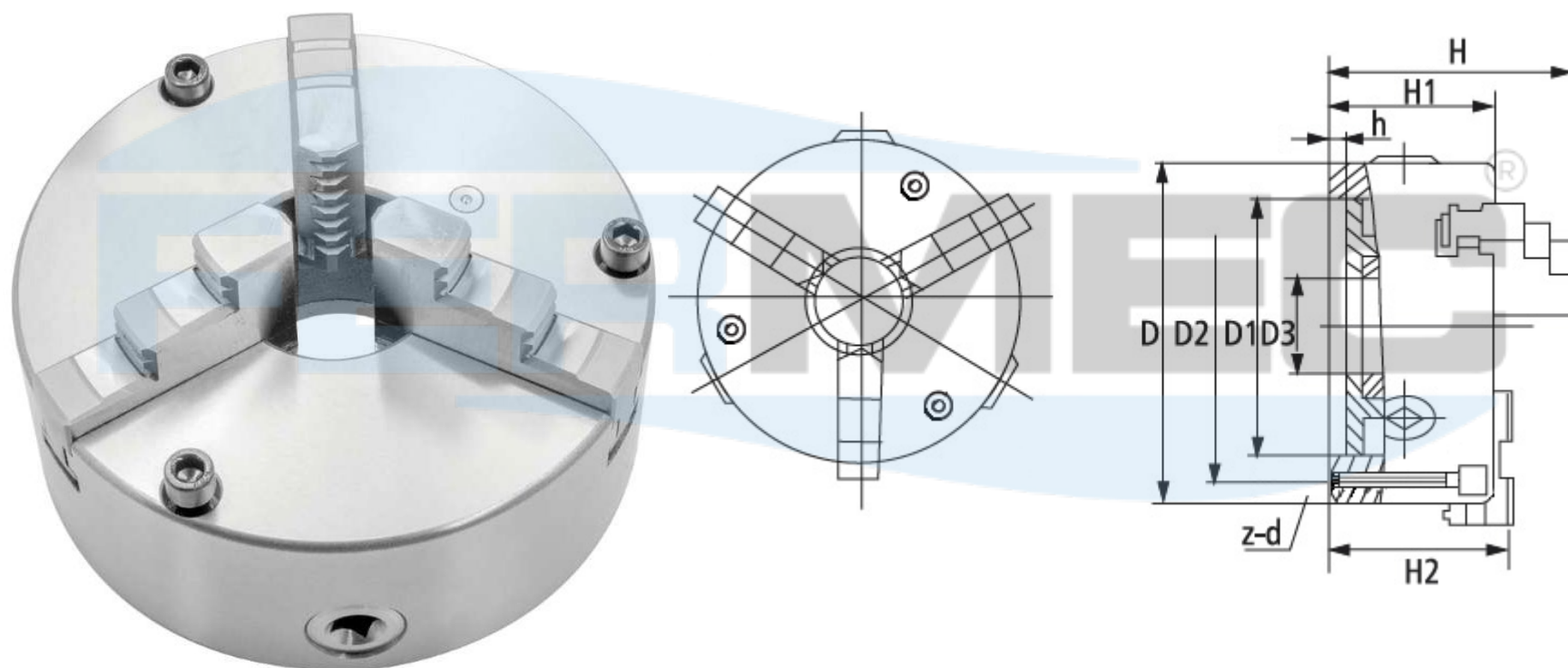
FIXAÇÃO TRASEIRA



Código	Modelo	D	D1	D2	D3	H	H1	h	z-d	Máx. R.P.M
04533	K11-80	80	55	66	16	66.5	50	4	3-M6	4000
01143	K11-100	100	72	84	22	74.5	55	3	3-M8	3500
03612	K11-125	125	95	108	30	84.5	58	4	3-M8	3000
00189	K11-160	160	130	142	45	94	65	5	3-M8	2500
00190	K11-200	200	165	180	65	109	75	5	3-M10	2000
00191	K11-250	250	206	226	80	120	80	5	3-M12	1600
02419	K11-315	315	260	265	100	136	90	6	3-M16	1200
04531	K11-400	400	340	368	145	154	106	6	3-M16	1000
04532	K11-500	500	440	465	210	175	115	6	3-M16	800

PLACA AUTOCENTRANTE COM 3 CASTANHAS MONOBLOCO

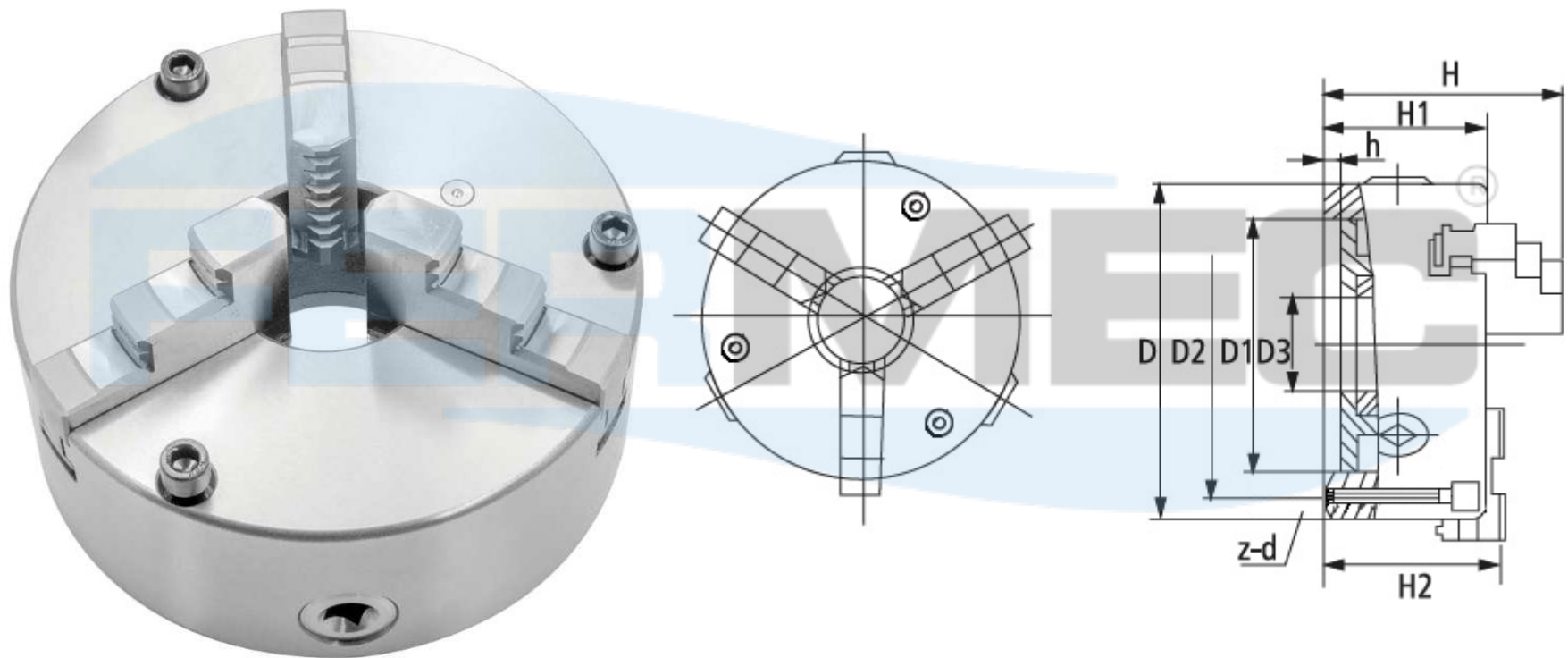
FIXAÇÃO FRONTAL



Código	Modelo	D	D1	D2	D3	H	H1	h	z-d
05797	K11-160F	160	130	142	45	94	65	5	3-M8
05798	K11-200F	200	165	180	65	109	75	5	3-M10
05799	K11-250F	250	206	226	80	120	80	5	3-M12

PLACA AUTOCENTRANTE COM 3 CASTANHAS MONOBLOCO

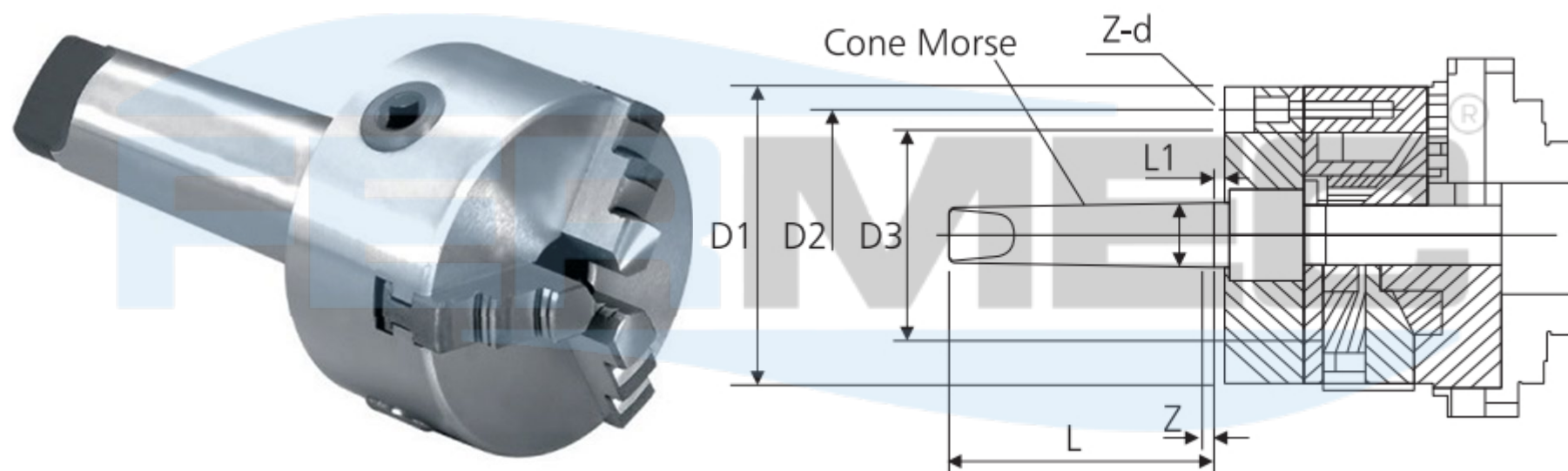
FIXAÇÃO FRONTAL - (corpo de aço)



Código	Modelo	D	D1	D2	D3	H	H1	h	z-d	Máx. R.P.M
05803	K11-160GF	160	130	142	45	94	65	5	3-M8	3800
05804	K11-200GF	200	165	180	65	109	75	5	3-M10	3000
05805	K11-250GF	250	206	226	80	120	80	5	3-M12	2400

PLACA AUTOCENTRANTE COM 3 CASTANHAS MONOBLOCO

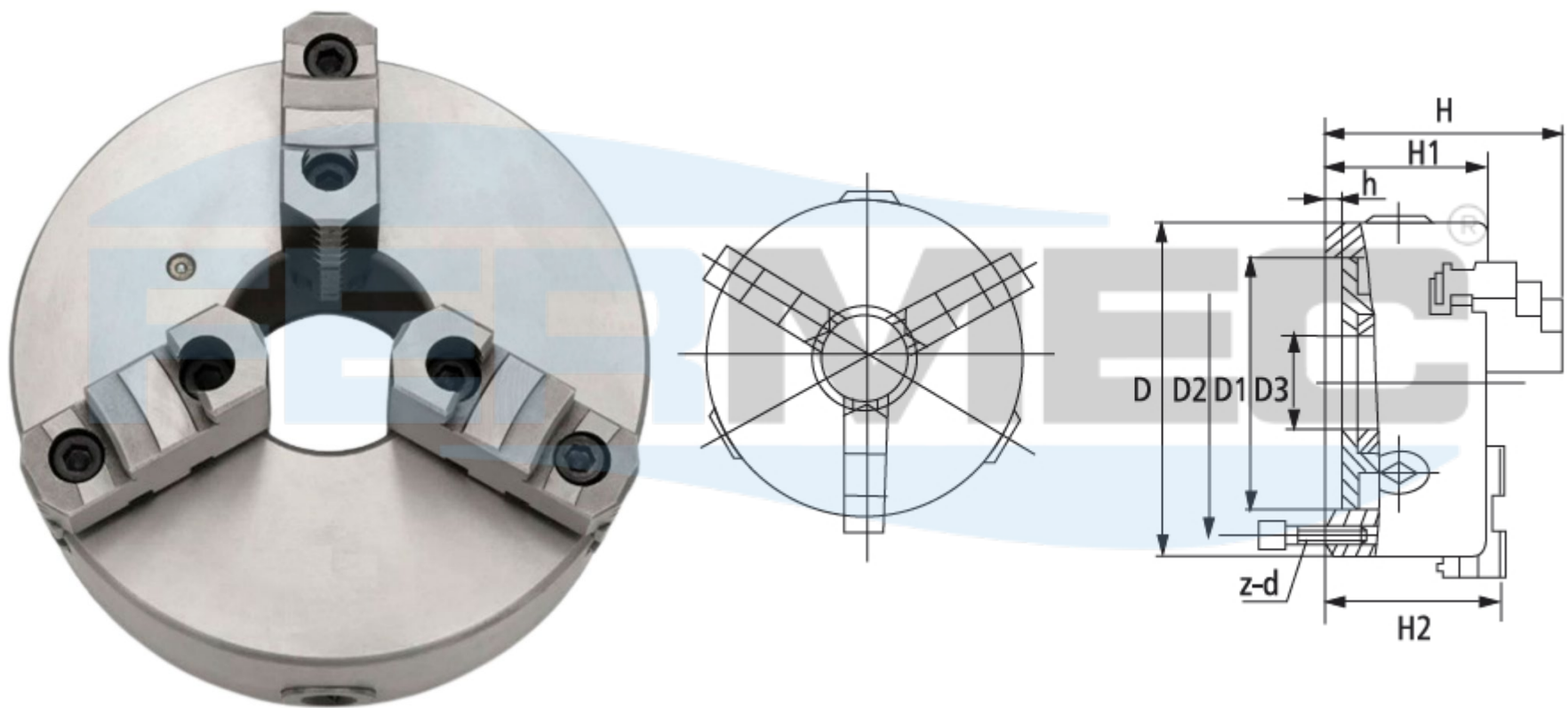
COM HASTE CÔNICA



Código	Modelo	D	D1	D2	D3	L	Z (±0.05mm)	L1	z-d	Máx. R.P.M
05191	K11-80-MS3	23.825	80	66	55	81	1	5	3-M6	4800
05192	K11-80-MS4	31.267	80	66	55	102,5	1.5	6.5	3-M6	4800
05193	K11-100-MS3	23.825	100	84	72	81	1	5	3-M8	4200
05194	K11-100-MS4	31.267	100	84	72	102,5	1.5	6.5	3-M8	4200
05195	K11-100-MS5	44.399	100	84	72	129,5	1.5	6.5	3-M8	4200

PLACA AUTOCENTRANTE COM 3 CASTANHAS REVERSÍVEIS

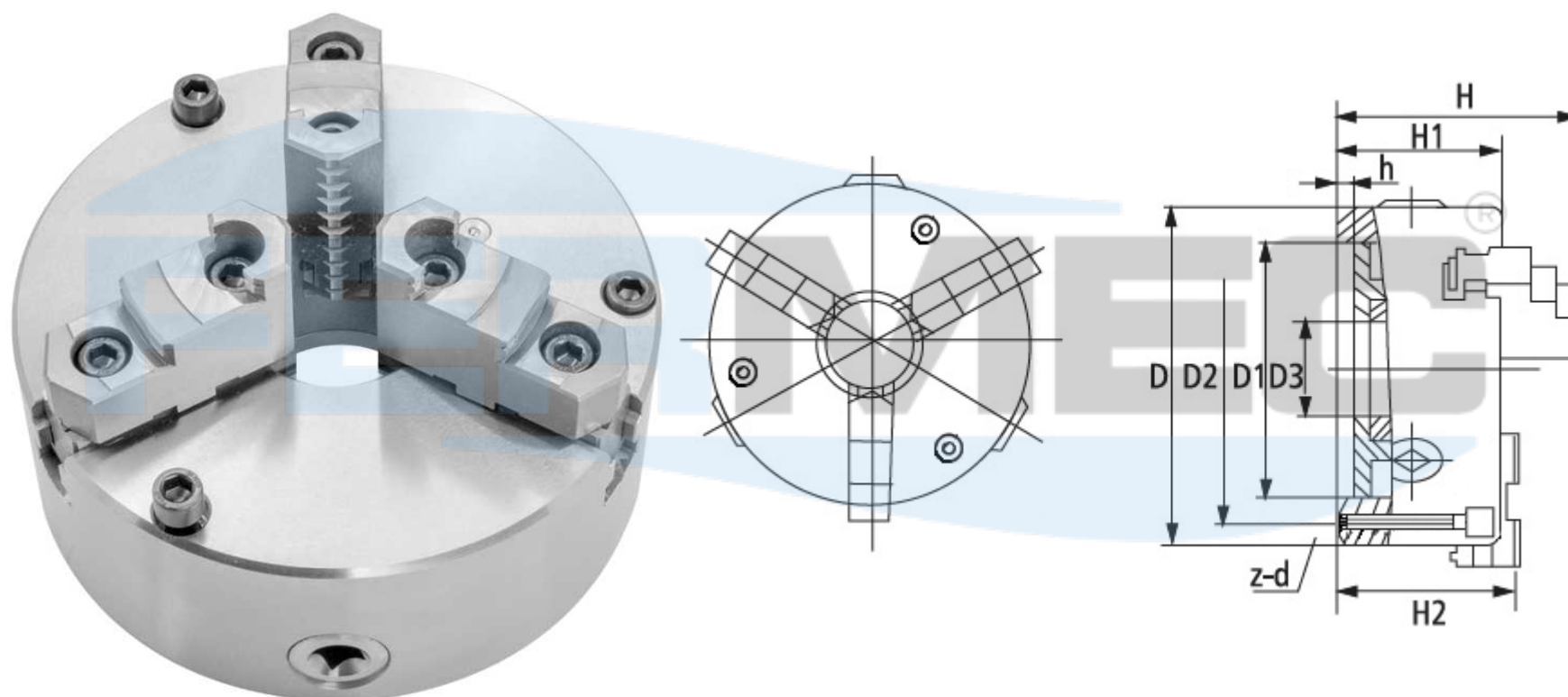
FIXAÇÃO TRASEIRA



Código	Modelo	D	D1	D2	D3	H	H1	H2	h	z-d	Máx. R.P.M
03613	K11-125A	125	95	108	30	95	58	63	4	3-M8	3000
01757	K11-160A	160	130	142	45	109	65	71.0	5	3-M8	2500
02420	K11-200A	200	165	180	65	122	75	80	5	3-M10	2000
02421	K11-250A	250	206	226	80	136	80	86.0	5	3-M12	1600
02422	K11-315A	315	260	285	100	148	90	95	6	3-M16	1200
05663	K11-400A	400	340	368	145	172	106,50	108	6	6-M16	1000
05664	K11-500A	500	440	465	210	197	115,40	126	6	6-M16	800

PLACA AUTOCENTRANTE COM 3 CASTANHAS REVERSÍVEIS

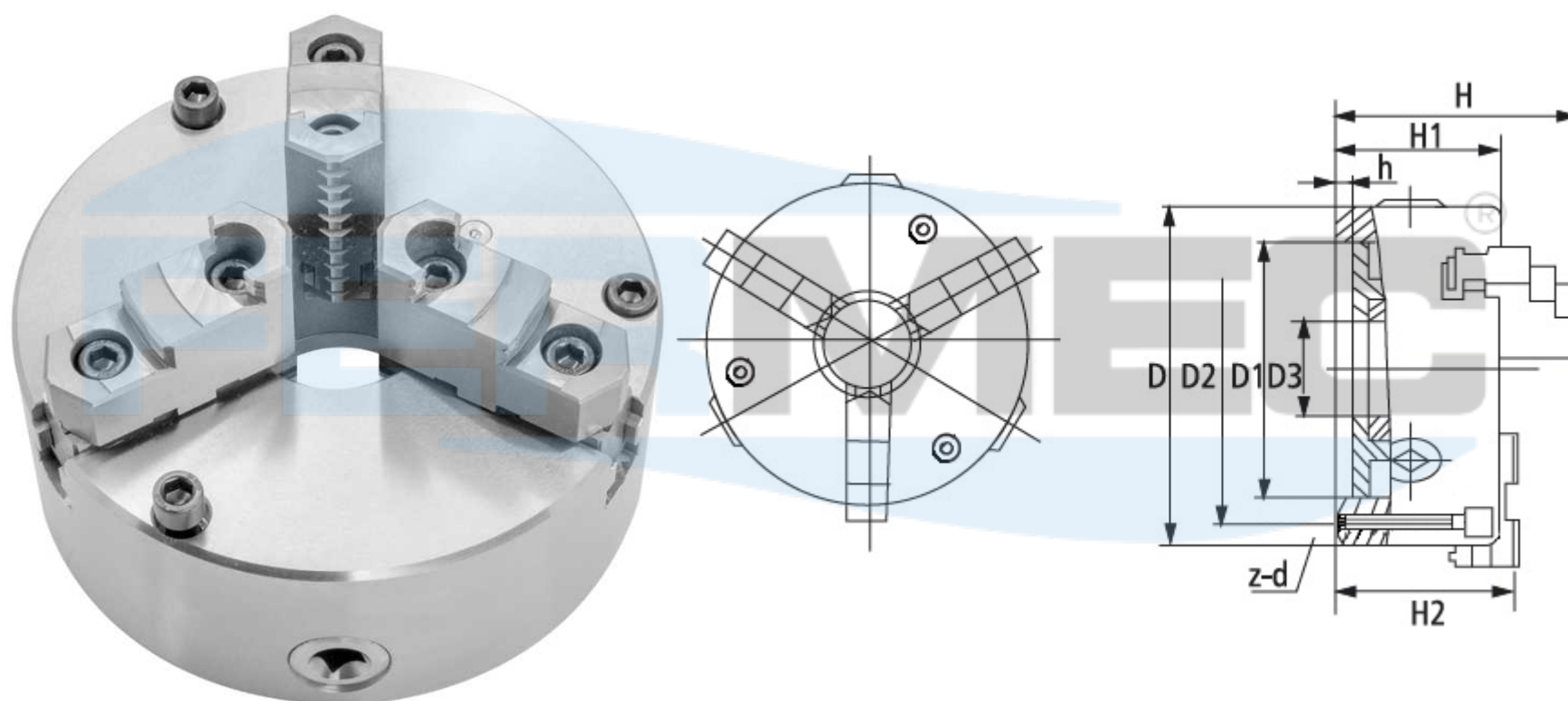
FIXAÇÃO FRONTAL



Código	Modelo	D	D1	D2	D3	H	H1	H2	h	z-d	Máx. R.P.M
05800	K11-160AF	160	130	142	45	109	65	71.0	5	3-M8	2500
05801	K11-200AF	200	165	180	65	122	75	80	5	3-M10	2000
05802	K11-250AF	250	206	226	80	136	80	76.0	5	3-M12	1600

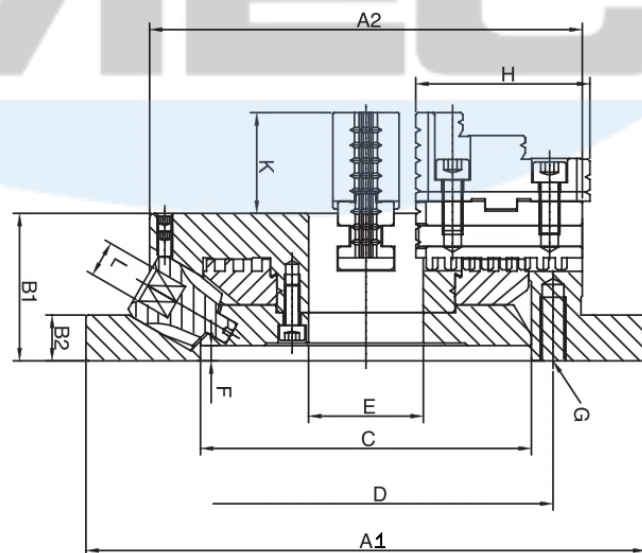
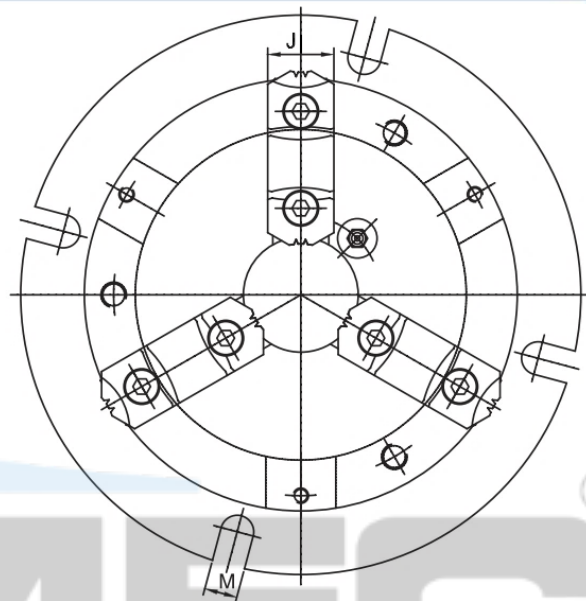
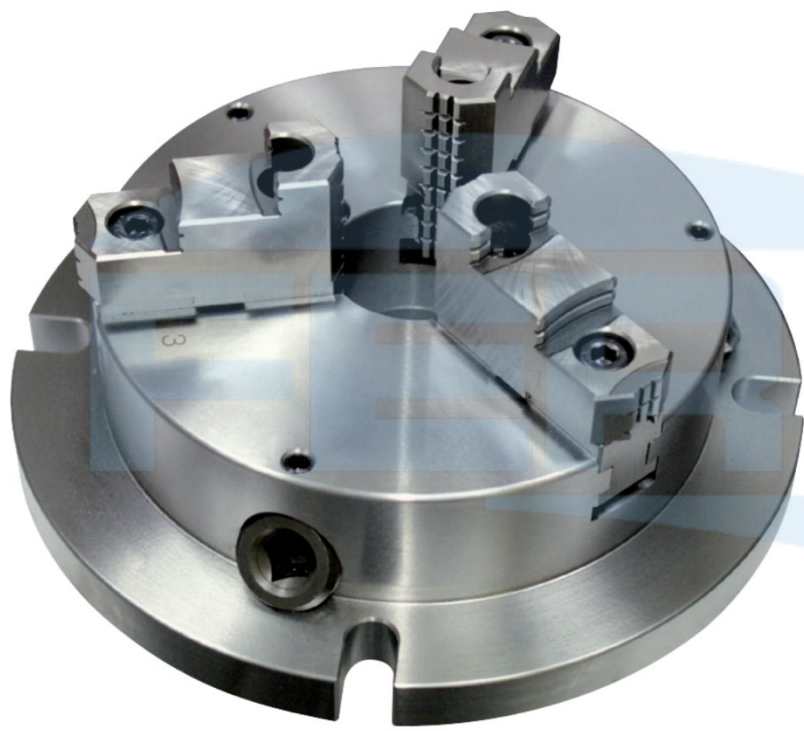
PLACA AUTOCENTRANTE COM 3 CASTANHAS REVERSÍVEIS

FIXAÇÃO FRONTAL - (corpo de aço)



Código	Modelo	D	D1	D2	D3	H	H1	H2	h	z-d	Máx. R.P.M
05806	K11-160AGF	160	130	142	45	109	65	71.0	5	3-M8	3800
05807	K11-200AGF	200	165	180	65	122	75	80	5	3-M10	3000
05808	K11-250AGF	250	206	226	80	136	80	86.0	5	3-M12	2400

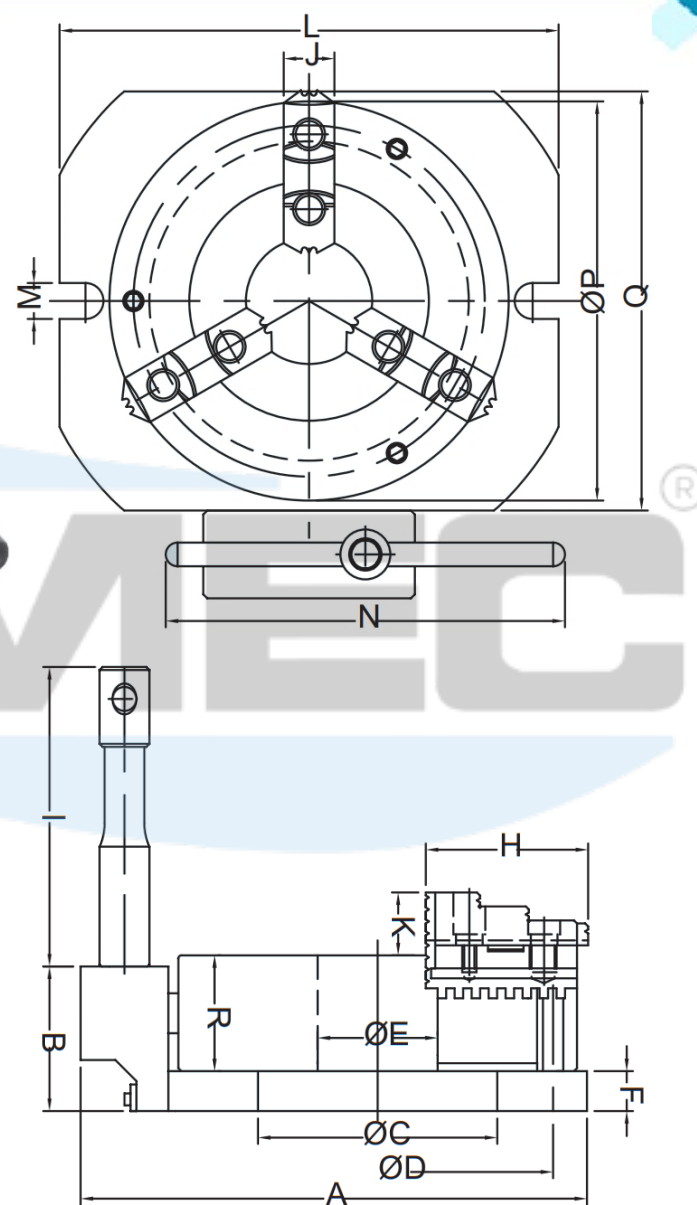
PLACA DE 3 CASTANHAS REVERSÍVEIS COM FLANGE INCORPORADA



Código	Modelo	A1	A2	B1	B2	C	D	E	F
P3CR-220-FI	VNBK-6	220	170	58	18	130	147	45	6
P3CR-270-FI	VNBK-8	270	210	65	20	155	172	60	6
P3CR-315-FI	VNBK-10	315	255	73	20	190	210	80	6
P3CR-370-FI	VNBK-12	370	305	80	22	250	285	105	5

Código	Modelo	G	H	J	K	L	M	Peso	Gama de aperto	
									Ø externo	Ø interno
P3CR-220-FI	VNBK-6	3-M10	68	26	40	10	13	12.4	Ø8-160	Ø48-150
P3CR-270-FI	VNBK-8	3-M10	82	28	43	11	13	20.2	Ø11-200	Ø62-190
P3CR-315-FI	VNBK-10	3-M12	93	32	52	12	16	30.5	Ø12-250	Ø72-240
P3CR-370-FI	VNBK-12	3-M12	118	40	59	14	18	46.8	Ø15-300	Ø86-290

PLACA VERTICAL DE 3 CASTANHAS

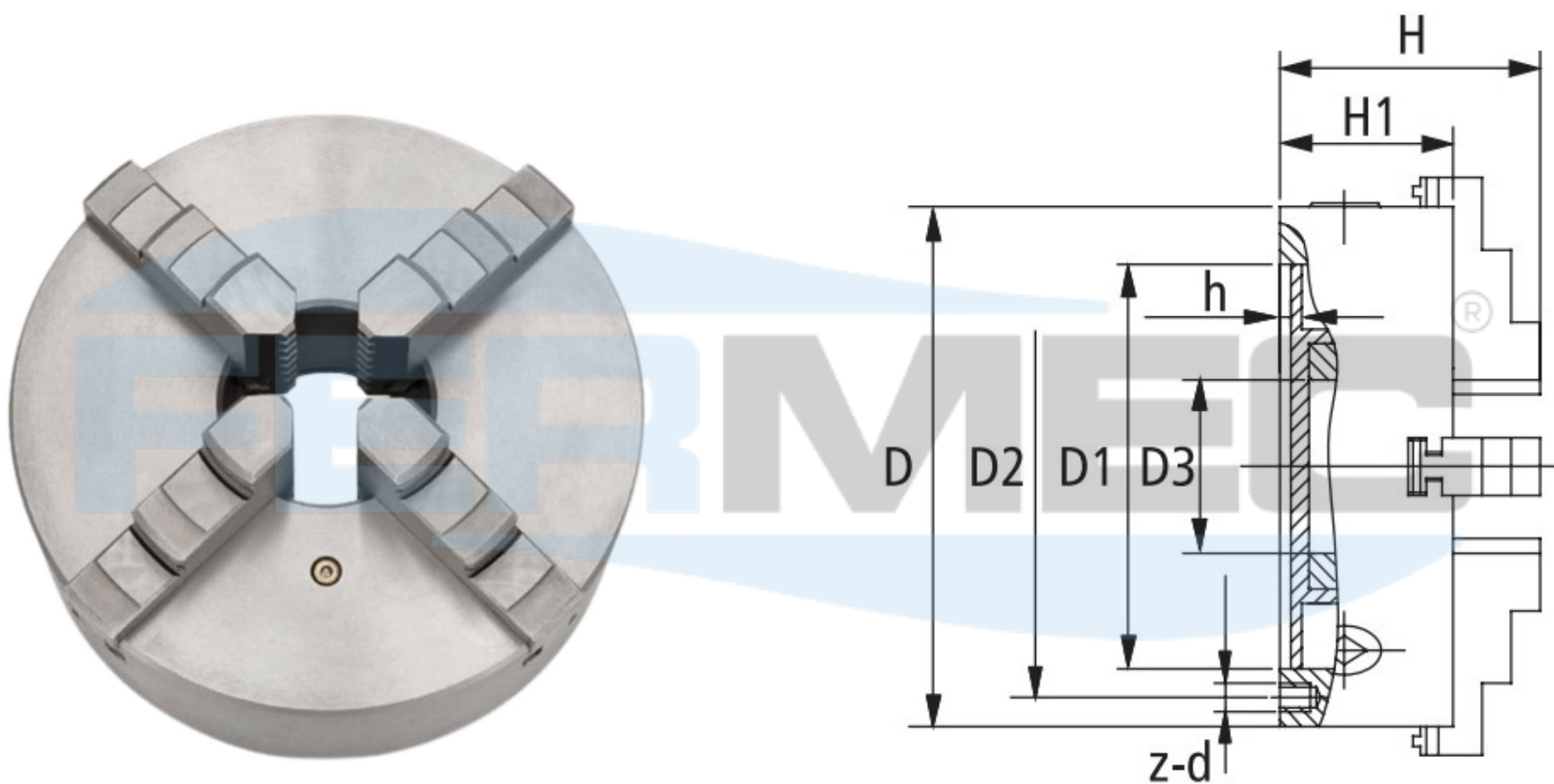


Código	Modelo	A	B	C	D	E	F	G	H	I	J	K
PV3C-150	VMJ-150	219	83	90	147	45	20	3-M10	72	150	26	39
PV3C-200	VMJ-200	254	83	120	176	58	20	3-M10	82	150	28	43
PV3C-250	VMJ-250	327	83	190	250	87	24	3-M12	100	150	35	50
PV3C-300	VMJ-300	364	83	220	285	105	20	3-M12	114	150	40	56

Código	Modelo	L	M	N	P	Q	R	Gama de aperto		Peso
								Ø externo	Ø interno	
PV3C-150	VMJ-150	215	18	200	165	175	67	Ø8-160	Ø55-150	17.7
PV3C-200	VMJ-200	250	18	200	200	200	76.5	Ø8-180	Ø62-170	24.4
PV3C-250	VMJ-250	324	18	200	273	283	87	Ø12-260	Ø80-250	48.7
PV3C-300	VMJ-300	360	18	200	310	310	96	Ø15-300	Ø90-290	63.7

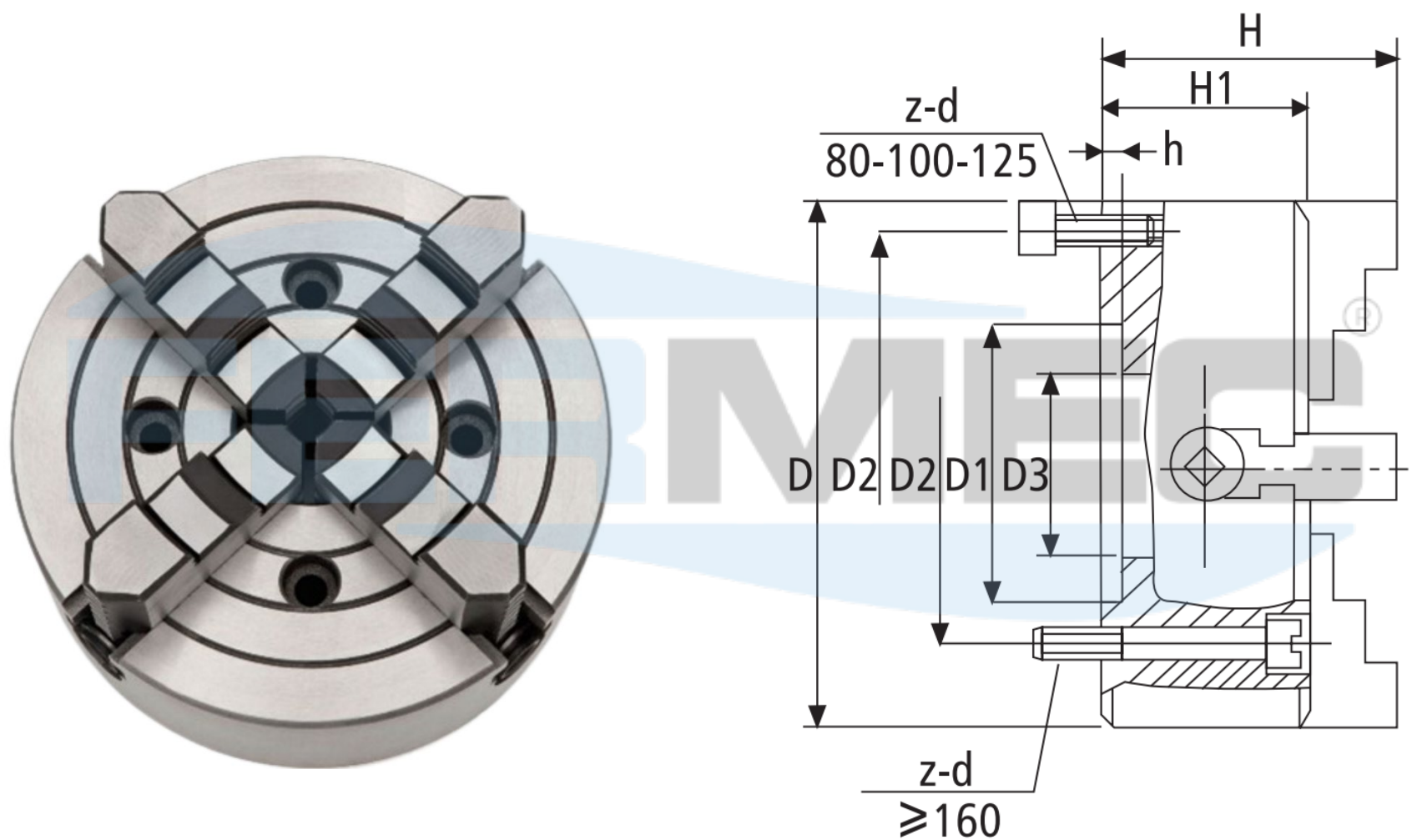
PLACA AUTOCENTRANTE COM 4 CASTANHAS MONOBLOCO

FIXAÇÃO TRASEIRA



Código	Modelo	D	D1	D2	D3	H	H1	h	z-d	Máx. R.P.M
02423	K12-80	80	55	66	16	66.5	50	4	3-M6	4000
02024	K12-100	100	72	84	22	74.5	53.5	3	3-M8	3500
00188	K12-160	160	130	142	45	94	65	5	3-M8	2500
02425	K12-200	200	165	180	65	109	75	5	3-M10	2000
02426	K12-250	250	206	226	80	120	80	5	3-M12	1600
02427	K12-315	315	260	285	100	136	90	6	3-M16	1200
02428	K12-400	400	340	368	145	154	106	6	6-M16	1000
02429	K12-500	500	440	465	210	175	115	6	6-M16	800

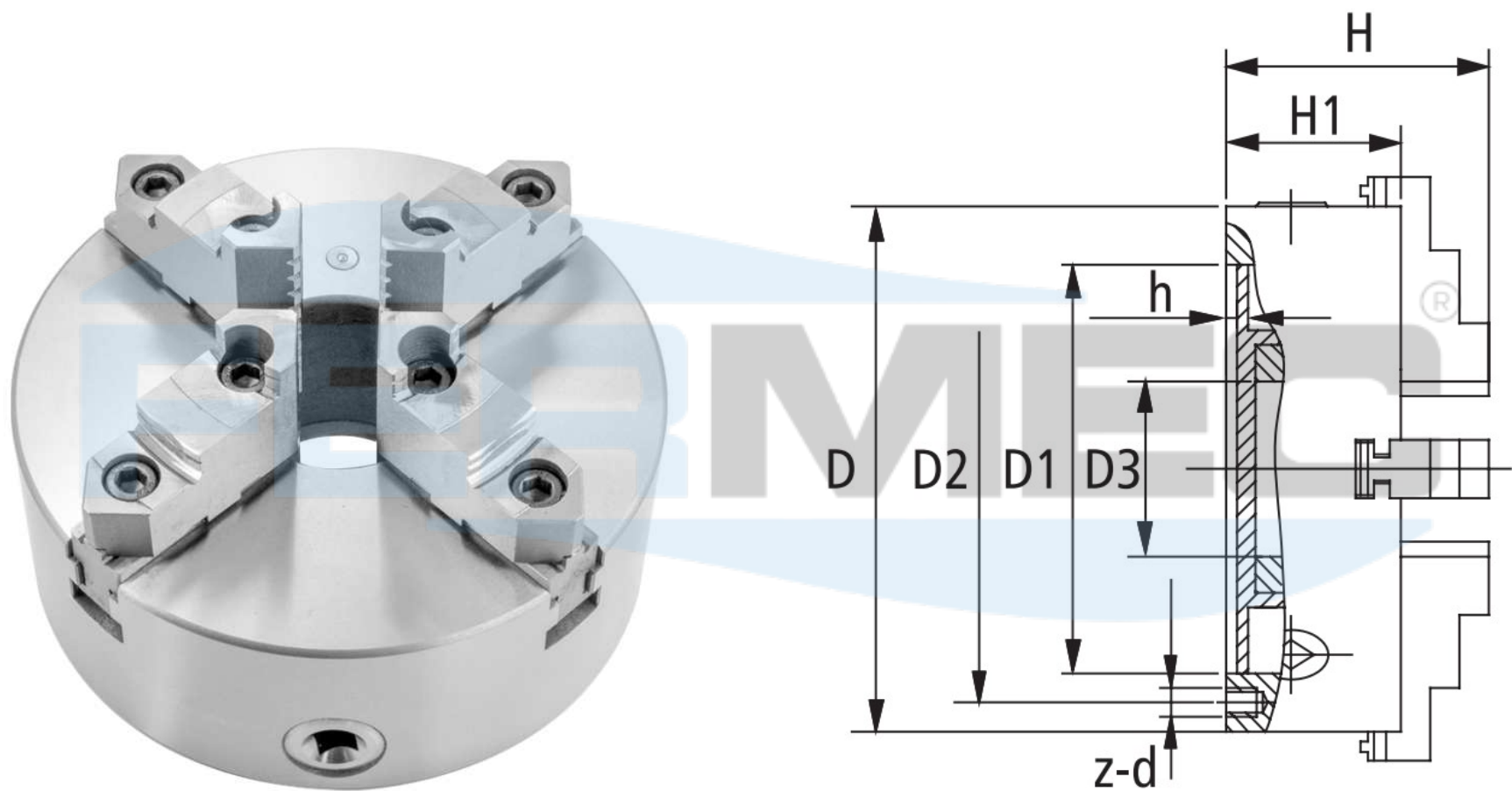
PLACA INDEPENDENTE COM 4 CASTANHAS MONOBLOCO



Código	Modelo	D	D1	D2	D3	H	H1	h	z-d	Máx. R.P.M
03692	K72-100	100	72	84	25	77	54	4	4-M8	4800
03693	K72-125	125	95	108	30	78	56	4.5	4-M8	4200
03694	K72-160	160	65	95	45	96.5	65	5	4-M10	3800
03695	K72-200	200	80	112	70	110	71	6	4-M10	2100
03696	K72-250	250	110	130	100	117.5	80	6	4-M12	1800
03697	K72-320	320	140	165	115	134	100	6	4-M16	1400
03698	K72-400	400	160	185	125	143	100	8	4-M16	950
03699	K72-500	500	200	236	170	161	106	8	4-M20	600

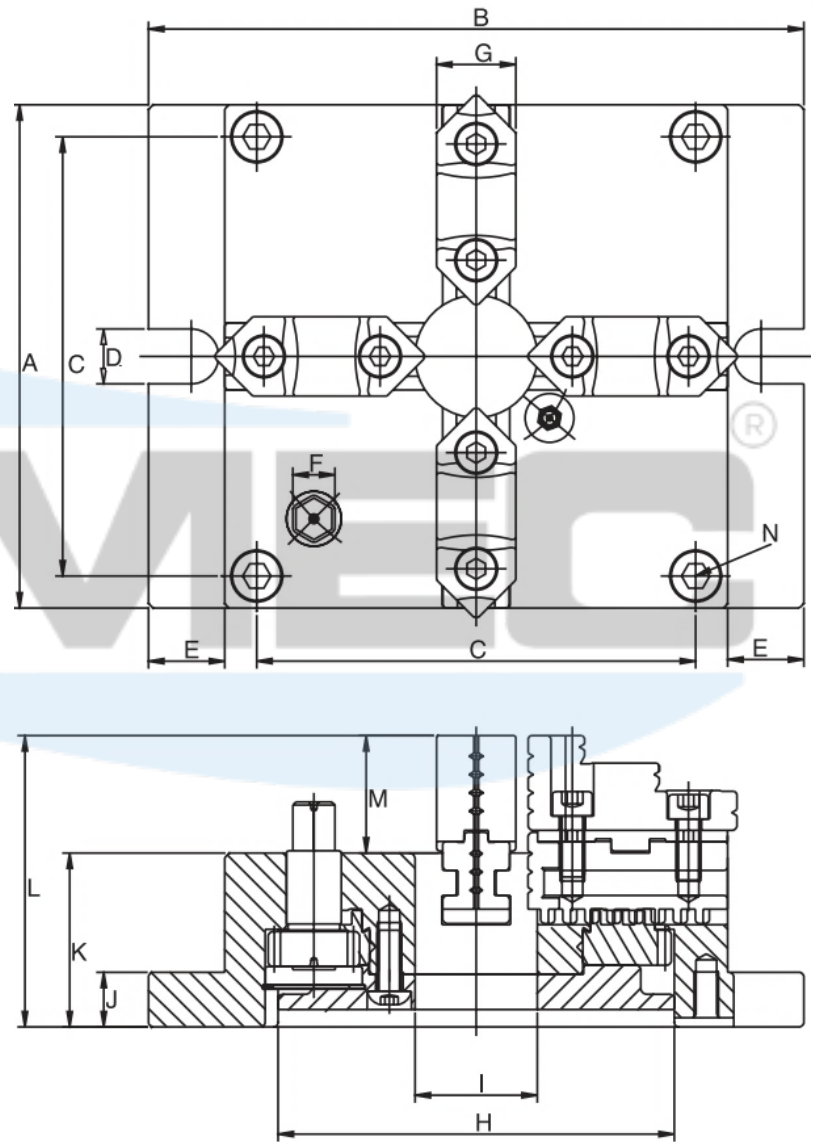
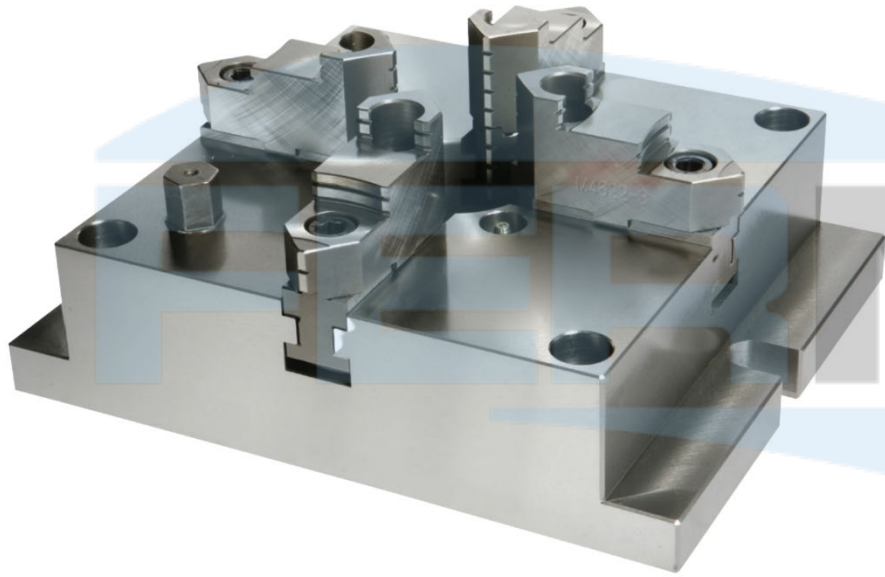
PLACA AUTOCENTRANTE COM 4 CASTANHAS REVERSÍVEIS

FIXAÇÃO TRASEIRA



Código	Modelo	D	D1	D2	D3	H	H1	h	z-d	Máx. R.P.M
02430	K12-160A	160	130	142	45	109	65	5	3-M8	2500
01706	K12-200A	200	165	180	65	122	75	5	3-M10	2000
02431	K12-250A	250	206	226	80	136	80	5	3-M12	1600
02432	K12-315A	315	260	285	100	148	90	6	3-M16	1200

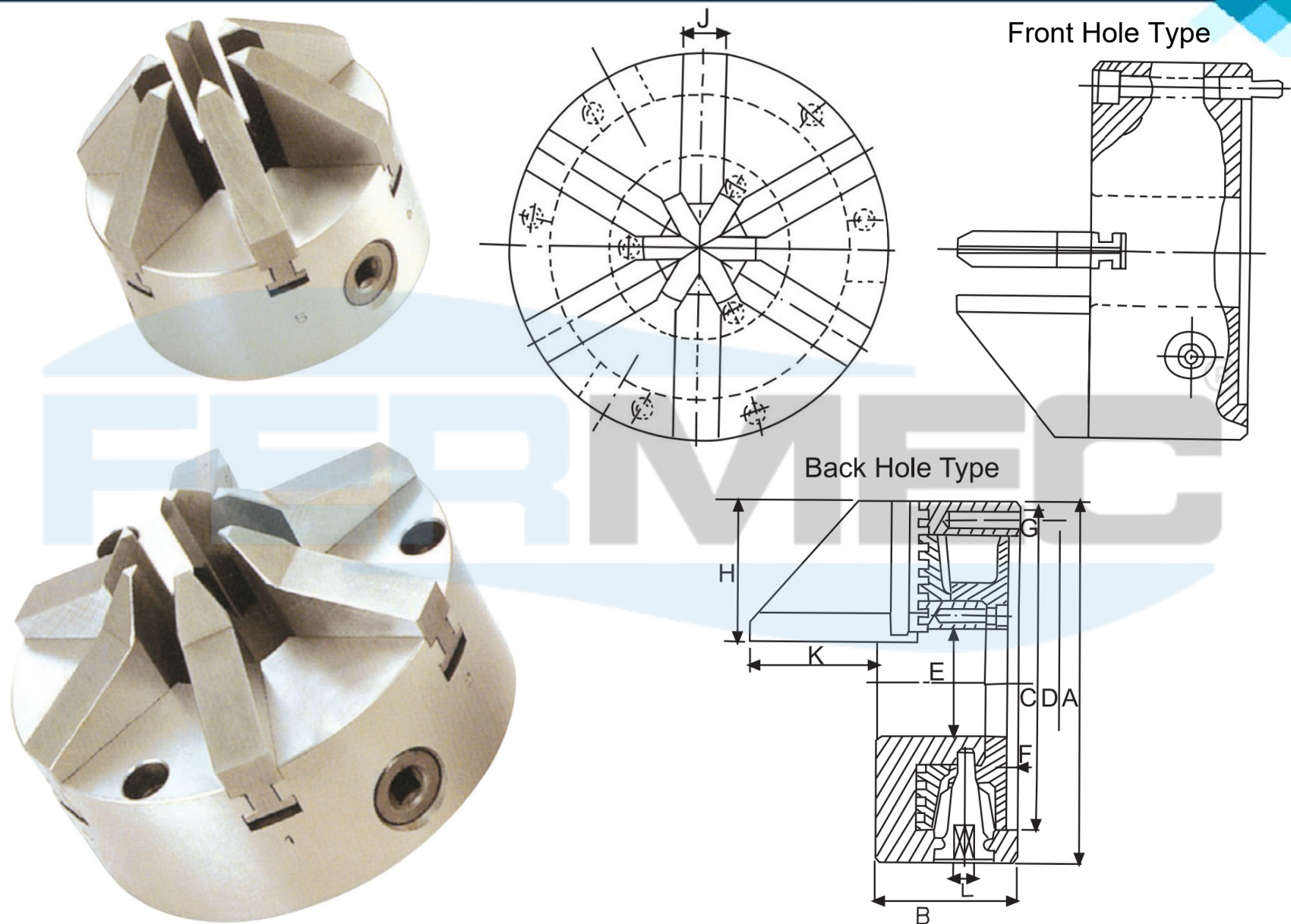
PLACA QUADRADA FIXA DE 4 CASTANHAS



Código	Modelo	A	B	C	D	E	G	H	I
PQF4C-165	VMJ-6	165	215	144	18	25	26	130	40
PQF4C-200	VMJ-8	200	250	174	18	25	28	160	55
PQF4C-250	VMJ-10	250	310	218	18	30	32	200	70
PQF4C-310	VMJ-12	310	380	274	22	35	40	260	100

Código	Modelo	J	K	L	M	N	Ø máximo de aperto	Peso
PQF4C-165	VMJ-6	18	57	96	39	4-M10	Ø4 - Ø128	13.5
PQF4C-200	VMJ-8	20	65	108	43	4-M12	Ø4 - Ø162	21.5
PQF4C-250	VMJ-10	22	72	122	50	4-M14	Ø4 - Ø200	36.1
PQF4C-310	VMJ-12	25	85	141	56	4-M16	Ø4 - Ø265	62.8

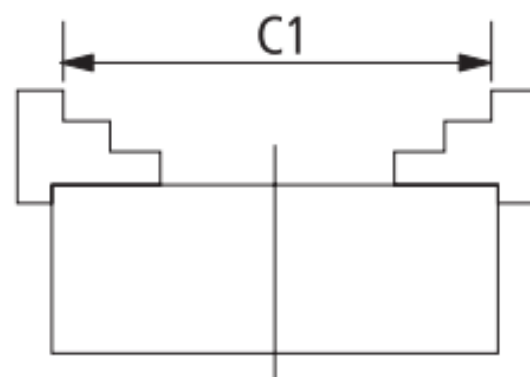
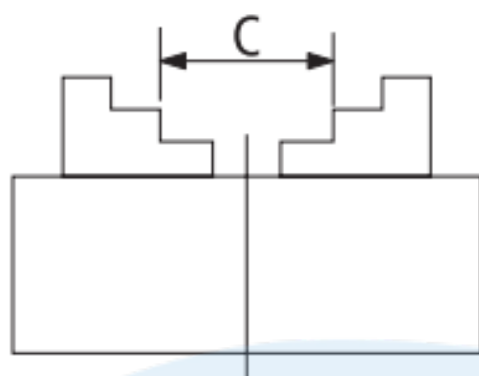
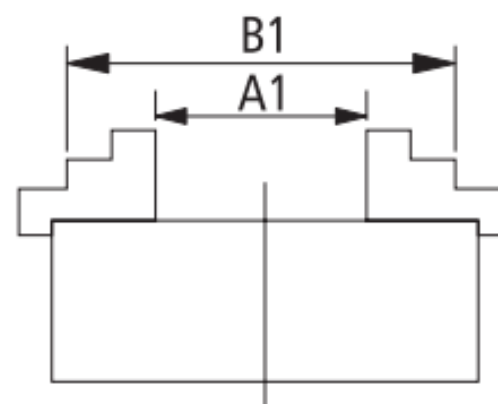
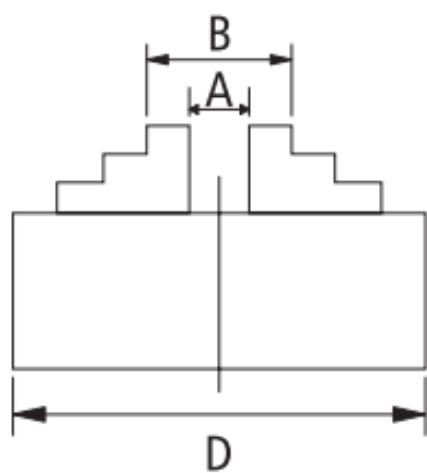
PLACA COM 6 CASTANHAS



Código	Modelo	A	B	C	D	E	F	G	H
P6C-112	VAS-4	112	58	80	95	32	4.5	3-M8	45
P6C-167	VAS-6	167	65	130	147	60	5	3-M10	66

Código	Modelo	J	K	L	Peso	Velocidade máxima	Gama de aperto Ø externo
P6C-112	VAS-4	14	46	8	4.2	1200	Ø2-32
P6C-167	VAS-6	19	43	10	9.2	1200	Ø3-80

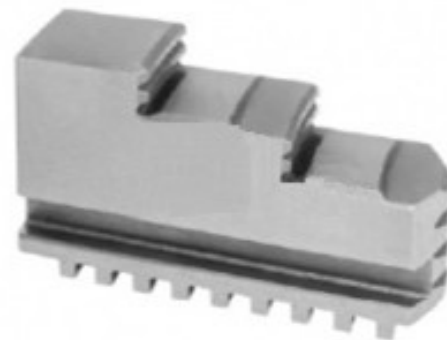
TABELA DE FIXAÇÃO



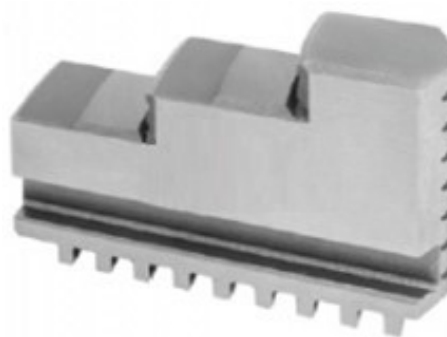
Placa (D)	Castanha Interna		Castanha Externa
	Faixa de Fixação		
	A - A1	B - B1	C - C1
80	2-22	25-70	22-63
100	2-30	30-90	30-80
125	2.5-40	38-125	38-110
160	3-55	50-160	55-145
200	4-85	65-200	65-200
250	6-110	80-250	90-250
315	10-140	95-315	100-315
400	15-210	120-400	120-400
500	25-280	150-500	150-500

CASTANHAS PARA PLACAS

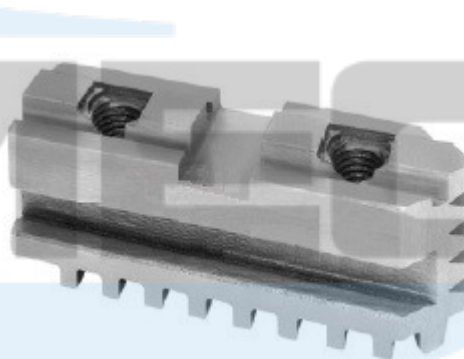
CASTANHA PARA DIÂMETROS
EXTERNOS E PARA EIXOS
Nº1



CASTANHA PARA DIÂMETROS
INTERNOS E PARA EIXOS
Nº2



CASTANHA BASE
(CACHORRINHO) PARA PLACAS
REVERSÍVEIS
Nº3



CASTANHA TOPO TEMPERADO
PARA PLACAS REVERSÍVEIS
Nº6

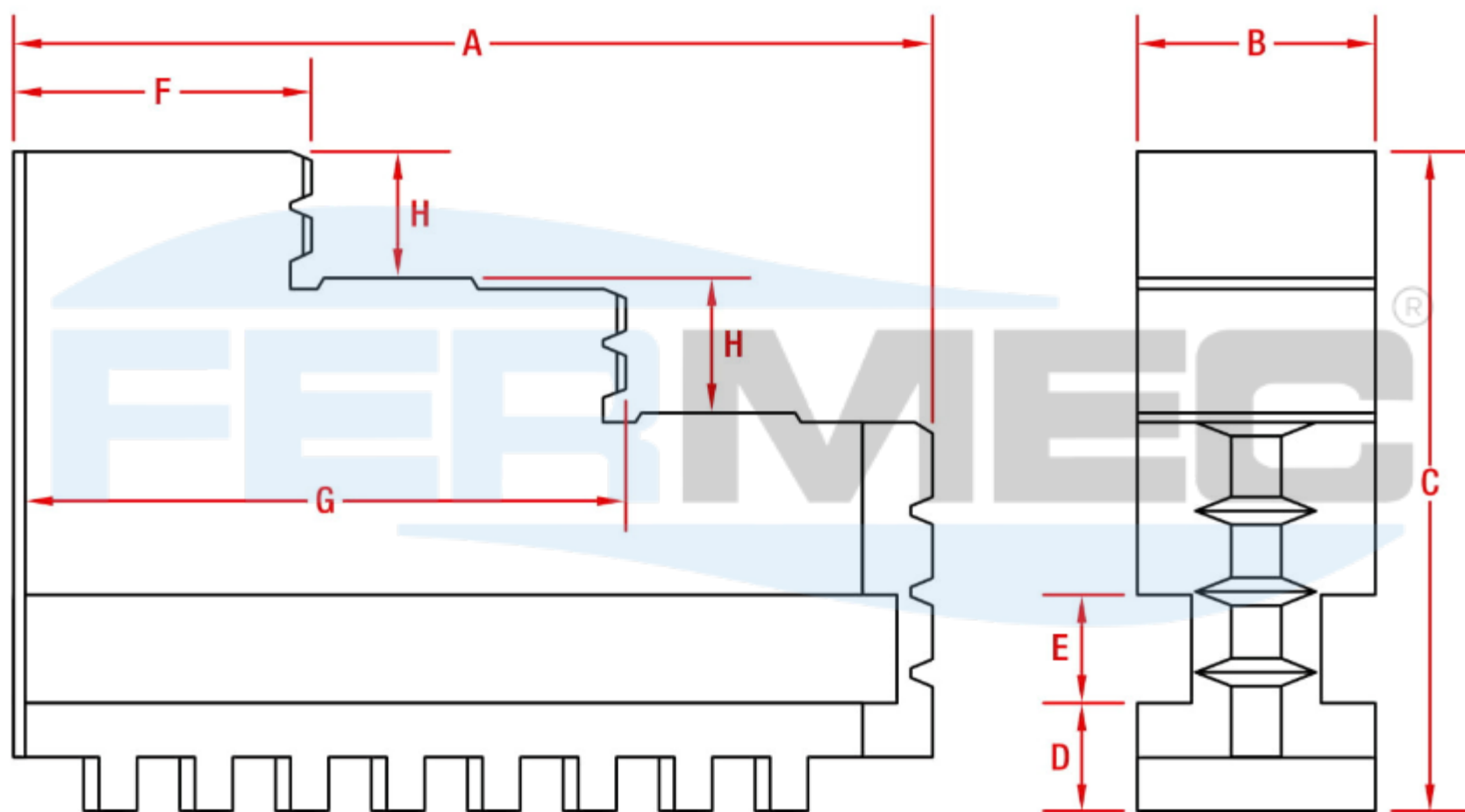


CASTANHAS TOPO MOLE PARA
PLACAS REVERSÍVEIS
Nº7



CASTANHA PARA DIÂMETROS EXTERNOS E PARA EIXOS

JCE CHT - N°1

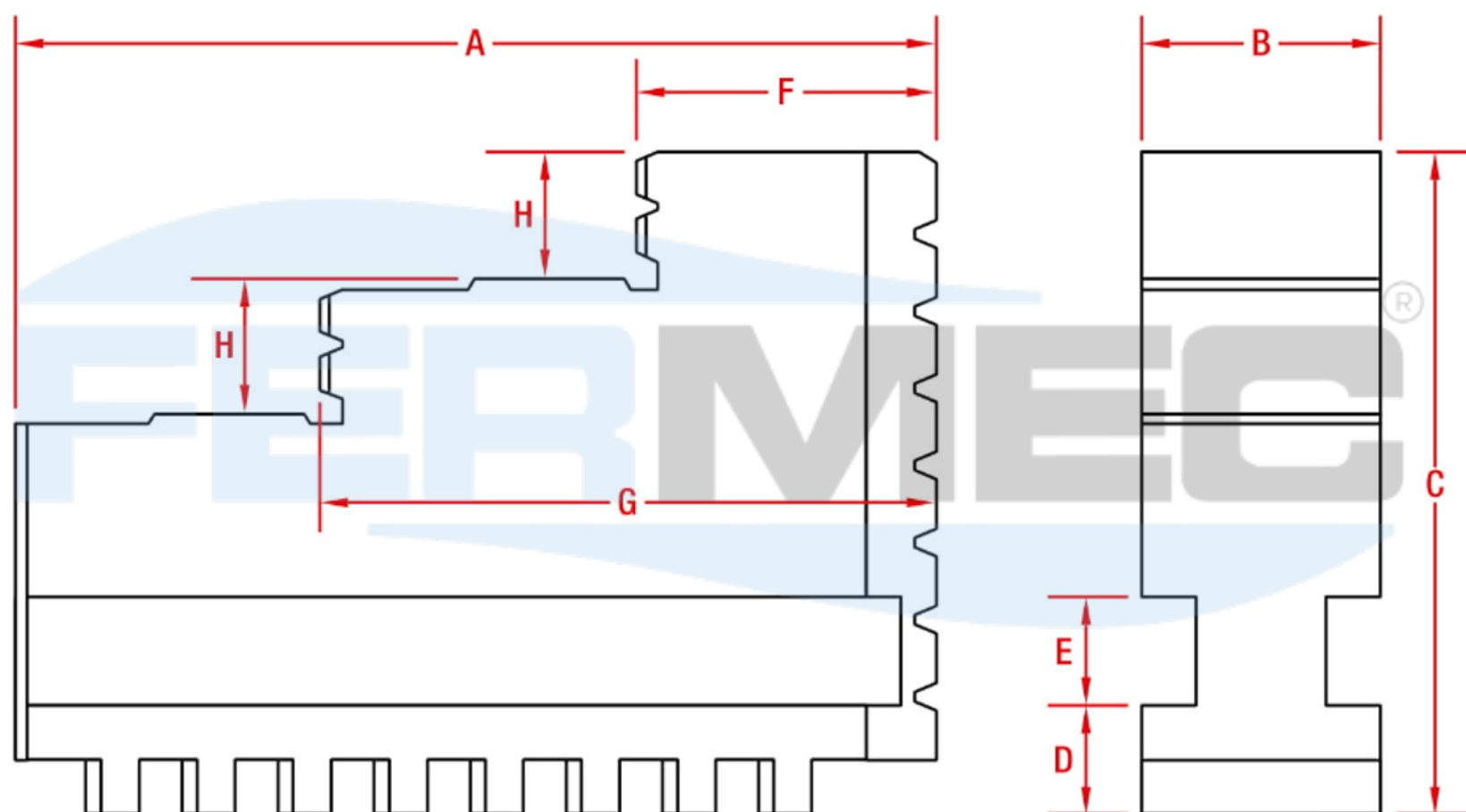


PLACAS:	80	100	130	160	200	250	315	400
A	32	42	56	70	85	105	125	138
B	12	15	16	18.5	22	27	36	36
C	33	38	46	54	61	69	86	90
D	6	6.5	7	9	10	12	13.5	13.5
E	7	8	8	10	10	10	13	13
F	11	13.5	17.5	23.5	27	34	34	42
G	22.5	28.5	38	47	57	70	84	94
H	6.5	7	9	12	12	12	17	17

Todos os valores expressos em milímetros (mm)

CASTANHA PARA DIÂMETROS INTERNOS E PARA EIXOS

JCI CHT - N°2

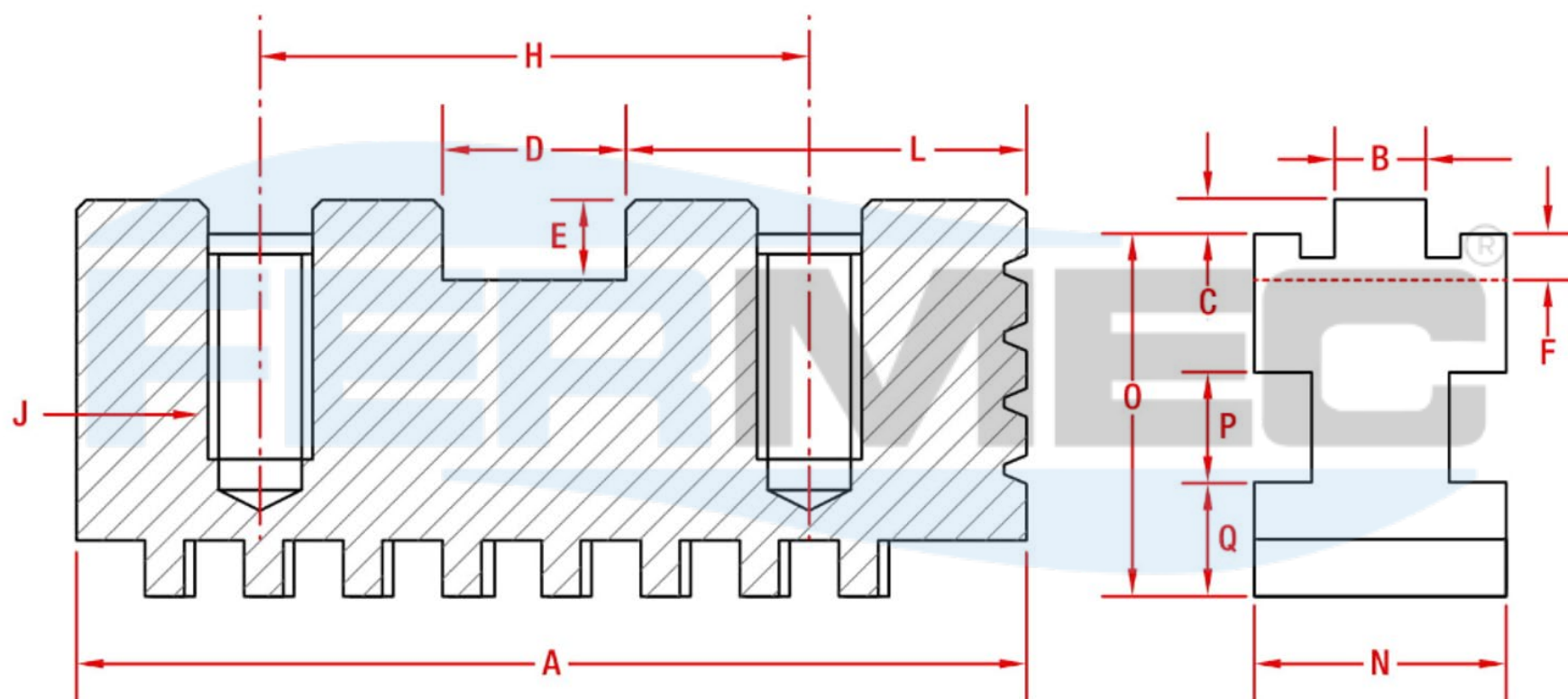


PLACAS:	80	100	130	160	200	250	315	400
A	32	42	56	70	85	105	125	138
B	12	15	16	18.5	22	27	36	36
C	33	38	46	54	61	69	86	90
D	6	6.5	7	9	10	12	13.5	13.5
E	7	8	8	10	10	10	13	13
F	11	14.5	17	23.5	29	35	33	42
G	22.5	28.5	38.5	47	58	71.5	82.5	93
H	6.5	7	9	12	12	12	17	17

Todos os valores expressos em milímetros (mm)

CASTANHA BASE (CACHORRINHO) PARA PLACAS REVERSÍVEIS

JCB CHT - Nº3

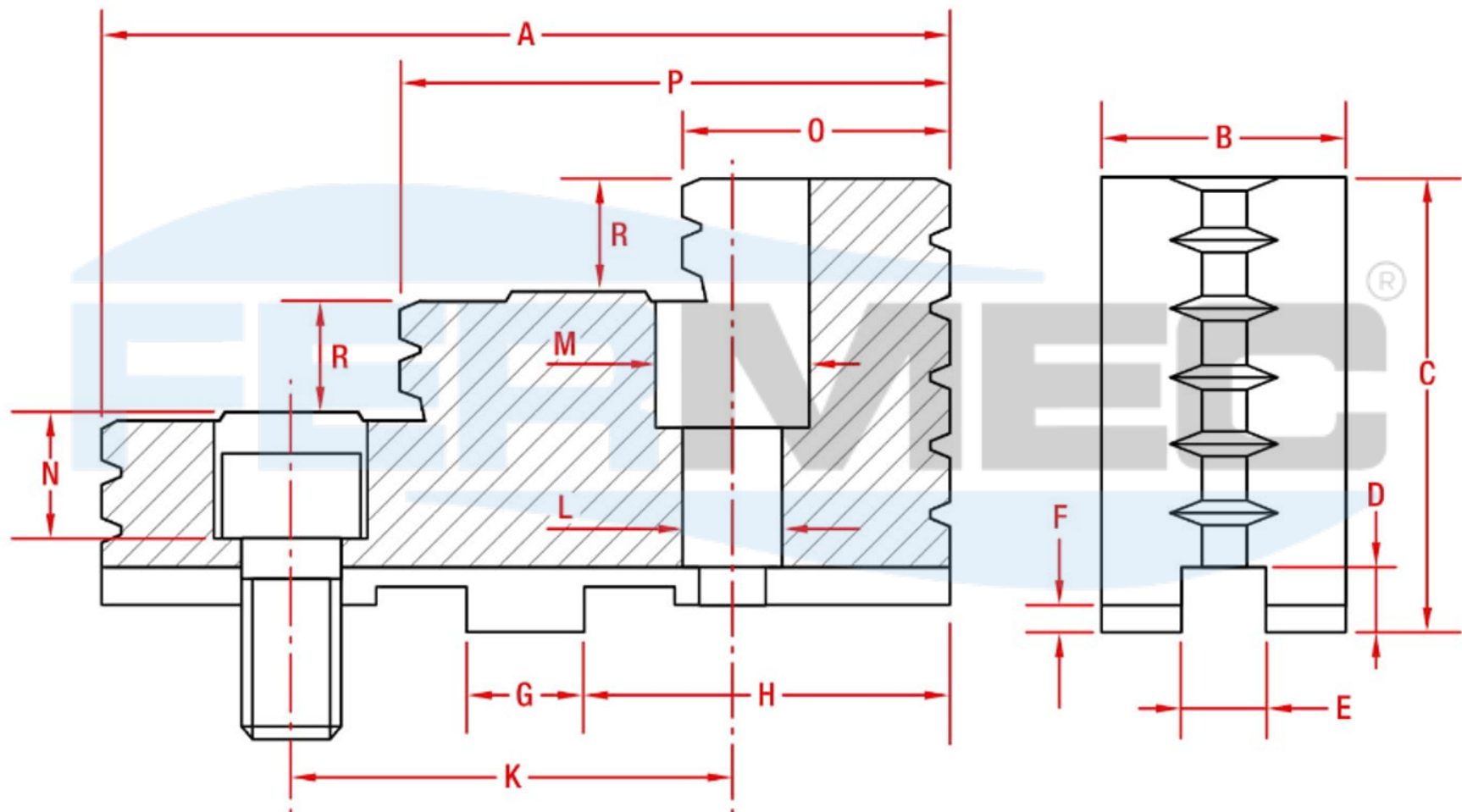


PLACAS:	160	200	250	315	400	500
A	64	80	95	114	125	65
B	7,94	7,94	12,7	12,7	12,7	12,7
C	3	3	3	3	3	3
D	12,675	12,675	19,025	19,025	19,025	19,025
E	7	7	7	7	10	10
F	4	4	4	4	7	7
H	38	44,4	54	63,5	76,2	76,2
J	M10x1,5	M10x1,5	M12x1,75	M12x1,75	M16x2	M20x2,5
L	29	34,9	40	48	57	57
N	20	22	27	36	36	46
O	30	32	34	40	43	52
P	10	10	10	13	13	18
Q	9	10	12	13,5	13,5	17

Todos os valores expressos em milímetros (mm)

CASTANHA TOPO TEMPERADO PARA PLACAS REVERSÍVEIS

JCS CHT - Nº6

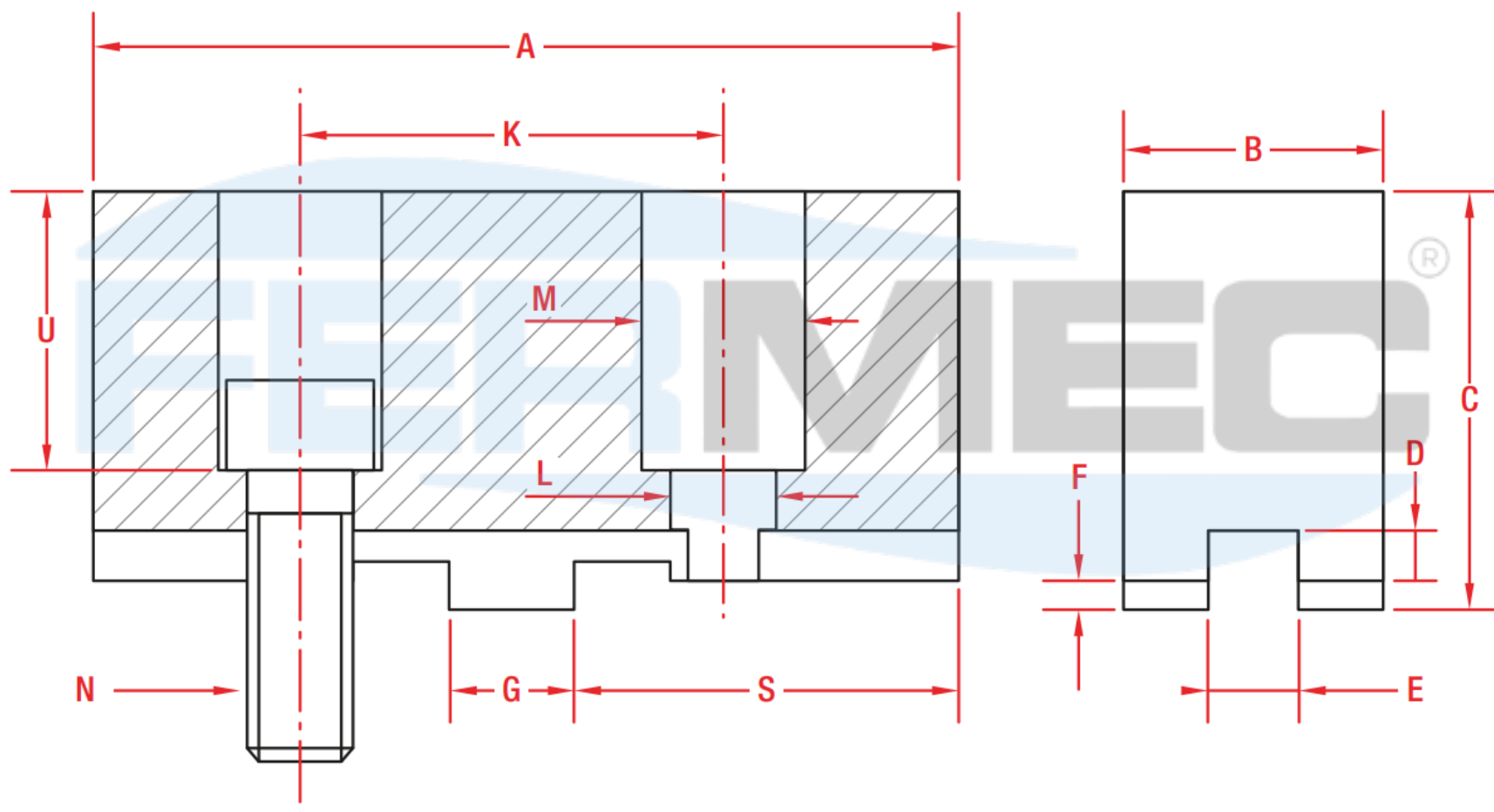


PLACAS:	160	200	250	315	400	500
A	68	80	97	116	127	130
B	25	30	36	42	45	50
C	41	45	51	62	68	86
D	7	7	7	7	10	10
E	7,94	7,94	12,7	12,7	12,7	12,7
F	3	3	3	3	6	6
G	12,675	12,675	19,025	19,025	19,025	19,025
H	29	34,9	40	40	57	57
K	38	44,4	54	54	76,2	76,2
L	11	11	13	13	18	22
M	18	18	20	20	26	33
N	11	11	13	13	17	21
O	19	23	25	25	46,2	51,8
P	44,5	51	65	65	83,4	84
R	9	10,5	12,5	17	20	22
Q	M10x1,5	M10x1,5	M12x1,75	M12x1,75	M16x2	M20x2,5

Todos os valores expressos em milímetros (mm)

CASTANHA TOPO MOLE PARA PLACAS REVERSÍVEIS

JCM CHT - Nº7

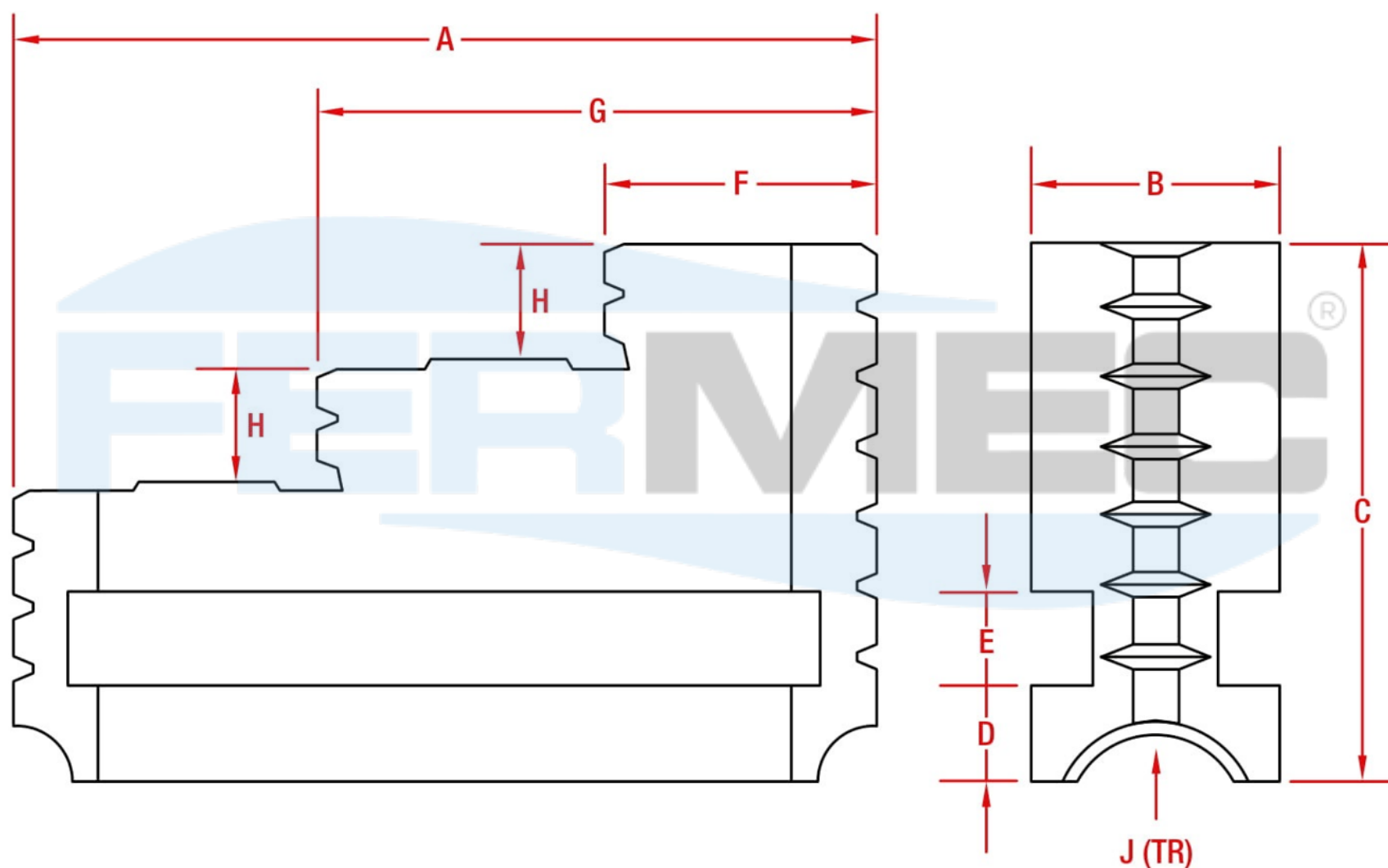


PLACAS:	160	200	250	315	400	500
A	74	90	110	120	135	140
B	25	30	36	45	45	50
C	45	47	51	62	66	86
D	4	4	4	4	4	4
E	7,94	7,94	12,7	12,7	12,7	12,7
F	3	3	3	3	6	6
G	12,675	12,675	19,025	19,025	19,025	19,025
K	38	44,4	54	63,5	76,2	76,2
L	11	11	13	13	18	22
M	17	17	20	20	26	33
N	M10x1,5	M10x1,5	M12x1,75	M12x1,75	M16x2	M20x2,5
S	31	38.5	54	52	56	60
U	30	30	37	48	48	62

Todos os valores expressos em milímetros (mm)

DIMENSÕES DAS CASTANHAS

JC CHT



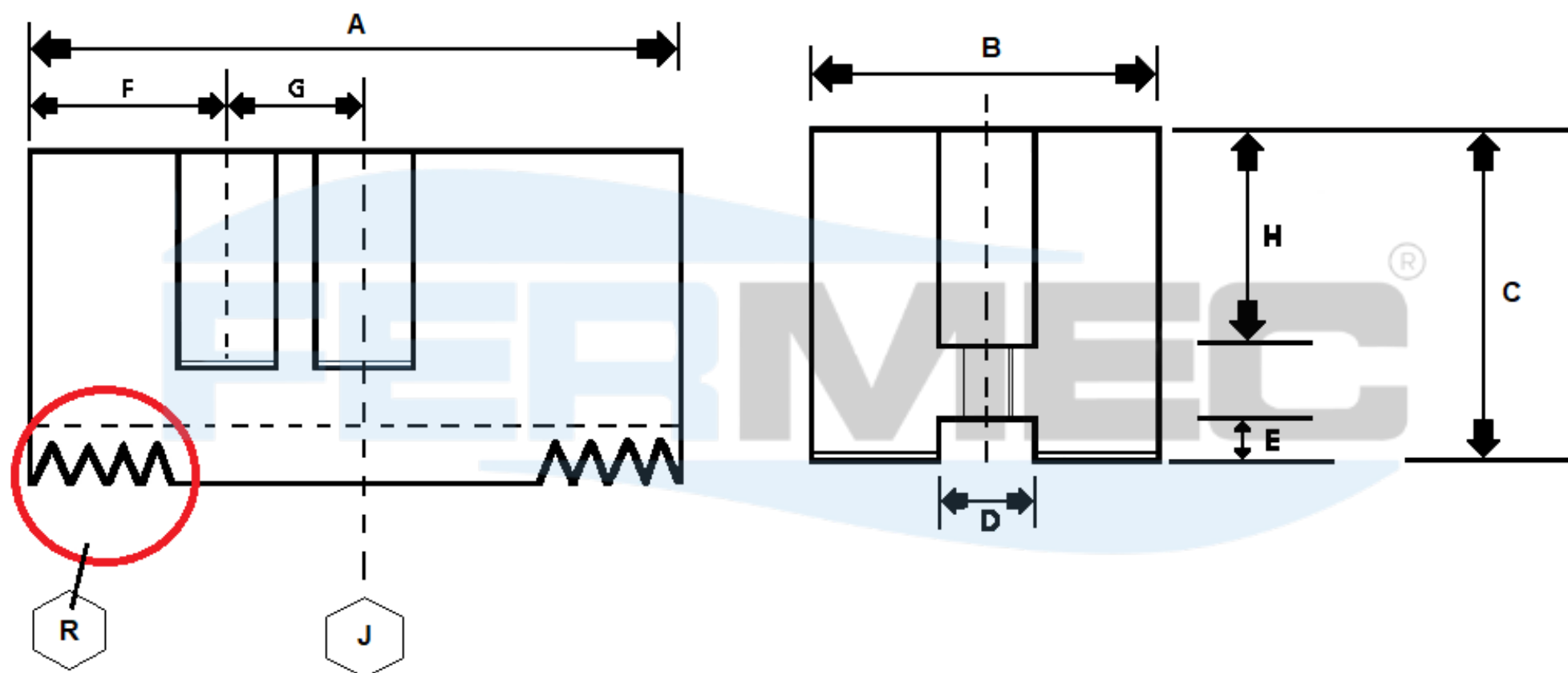
PLACAS:	125	160	200	250	315	350	400	500	630
A	54	61	75	90	115	115	115	145	172
B	16	20	25	27	36	36	36	45	50
C	42	51	57	67	81	71	81	95	109
D	7	9	10	12	14	14	14	16	18
E	8	10	10	10	13	13	13	16	18
F	16	19	23	28	35	35	35	45	57
G	35	40	49	59	75	75	75	95	114,5
H	8	10	12	15	18	18	18	20	25
J*	16x4	22x4	24x4	26x4	32x6	32x6	32x6	36x6	40x6

*Rosca trapezoidal TR

Todos os valores expressos em milímetros (mm)

CASTANHAS MOLES (RANHURAS C/2 FUROS)

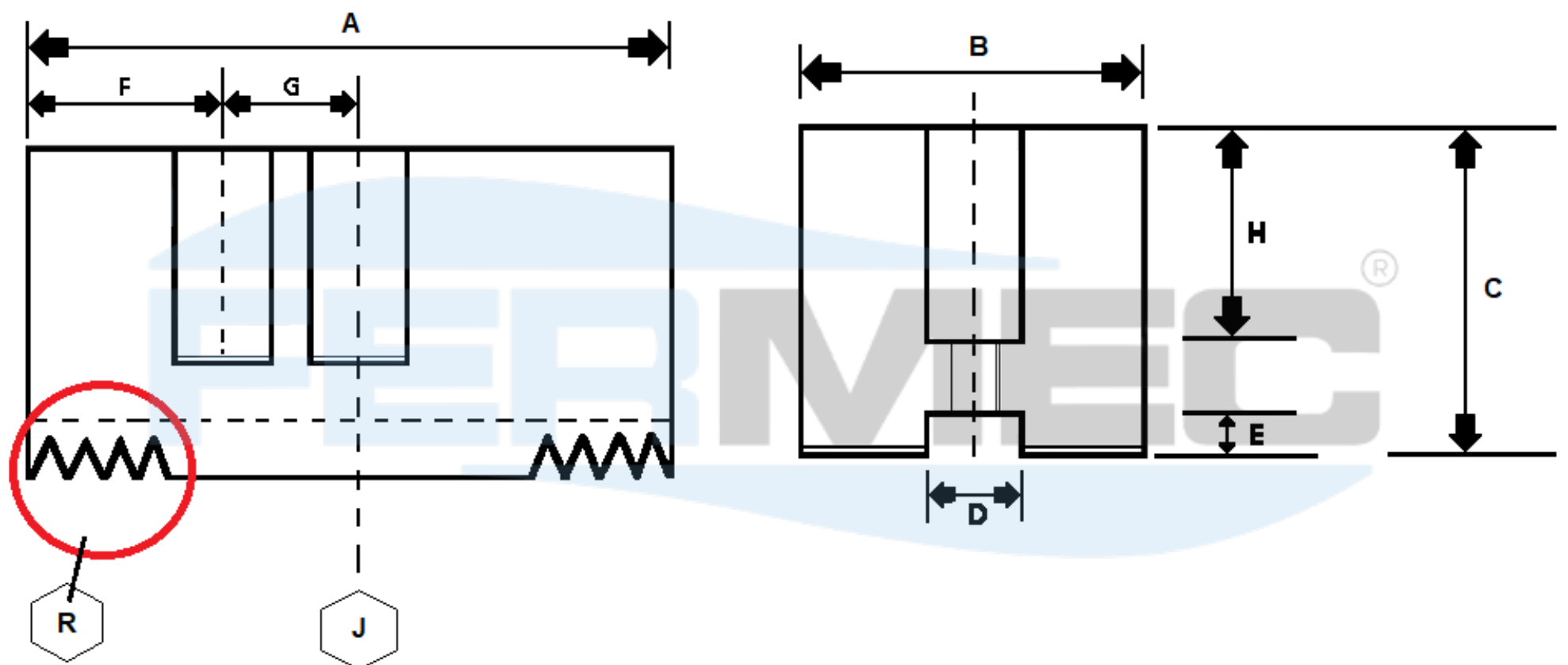
REF.635



Código	A	B	C	D	E	F	G	H	J	R	Aplicação
635.27	60	30	30	12	4	15	16	20	8,5	1/16"x90°	Autoblok 125/130/140
635.28	60	30	30	12	4	15	16	20	8.5	1,5x60°	Autoblok 125/130/140
635.29	70	30	35	14	5	16	16	25	11	1/16"x90°	Autoblok 165/175
635.38	70	30	35	14	5	16	16	25	11	1,5x90°	Autoblok 165/175
635.25	110	45	45	21	6	20	30	33	17	1/16"x90°	Autoblok 200/250
635.23	90	35	40	17	5	20	23	30	13	1/16"x90°	Autoblok 210
635.24	90	35	40	17	5	20	23	30	13	1,5x60°	Autoblok 210
635.26	110	45	45	21	6	20	30	33	17	1,5x60°	Autoblok 250
635.21	58	25	25	11	3.5	8	15	17	8.5	1/16x90°	Gamer 125
635.19	48	19	23	8	3	8	15	15	6.5	1,5x60°	Kitagawa 125
635.20	72	31	32	12	5	15	20	20	11	1,5x60°	Kitagawa 160
635.17	95	35	38	14	5	241	25	23	13	1,5x60°	Kitagawa 210
635.18	110	40	42	16	5	30	30	27	13	1,5x60°	Kitagawa 250
635.01	54	25	28	8	3.5	12.5	13	21	6.5	1/16x90°	Onça PP 125
635.05	58	29	36	12	3.5	14.5	1	28	8.5	1/16x90°	Onça PP 160
635.08	76	32	46	12	4.5	15.5	22	35	11	1/16x90°	Onça PP 200
635.11	89	35	48	16	4.5	17.5	25	36	13	1/16x90°	Onça PP 250
635.13	102	35	48	16	4.5	19.5	30	36	13	1/16x90°	Onça PP 315
635.33	54	23	29	10	5	12	14	20,5	8,5	1,5x60°	ROHM KFD - HE 130
635.34	72	33	40	12	5	15	20	27	11	1,5x60°	ROHM KFD - HE 170

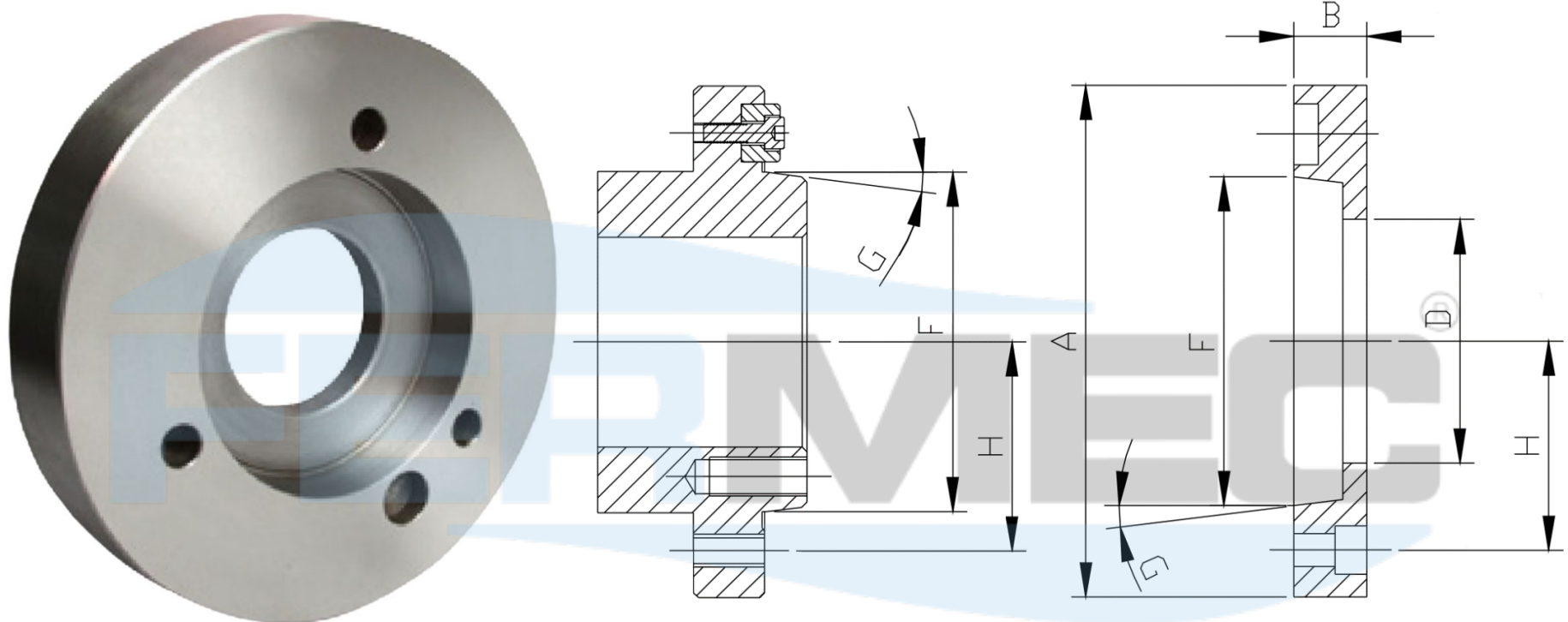
CASTANHAS MOLES (RANHURAS C/2 FUROS)

REF.635



Código	A	B	C	D	E	F	G	H	J	R	Aplicação
635.35	95	35	46	14	5	24	25	33	13	1,5x60°	ROHM KFD - HE 210
635.36	110	50	45	16	5	30	30	29	13	1,5x60°	ROHM KFD - HE 254
635.22	106	37,5	55	14	5	15	40	40	11	1/16"x55°	ROMI 230
635.02	55	27	38	12	3.5	9	15	28	8,5	1/16"x90°	ROHM AB 538.02 - KFD 130 - KFD HS 160/175 - LVE 125/160
635.09	89	37	53	14	5	18	26	41	11	1,5x60°	ROHM AB 530.07
635.10	89	45	55	20	5	18	26	42,5	13	1,5x60°	ROHM AB 530.10
635.41	53	23	30	10	3.5	21	12	20	6,5	1/16"x90°	ROHM AB 537.02 - KFDHS 130/140 KFD 110/125/140
635.03	67	37	53	17	5	12	19	43	13	1/16"x90°	ROHM AB 538.03 - KFDHS 200 KFDHF 160 - KFDHE 160 - KFD 160
635.04	67	31	43	11	3.5	17	20	33	8,5	1,5x60°	ROHM AB 538.04
635.07	75	37	53	17	5	12	19	43	13	1/16"x90°	ROHM AB 538.04 - LVE 200 - KFDHS / KFDHF / KFDHE / KFD 200
635.12	95	45	55	21	5	15	25	43	17	1/16"x90°	ROHM AB 538.05 - KFDHS 315 KFDHF 250 - KFDHE 250/315 KFD 250 - LVE 250/315/305
635.14	103	50	80	21	5	16	25	67	17	1/16"x90°	ROHM AB 538.06 - KFDHF - KFD 315
635.15	120	50	80	21	5	25	28	67	17	1/16"x90°	ROHM AB 538.11
635.16	120	50	80	21	5	25	28	67	17	1,5x60°	ROHM AB 538.12
635.42	45	27	32	10	3.5	15	15	23	8,5	1/16"x90°	ROHM AB 543.22 - KFD HS 110

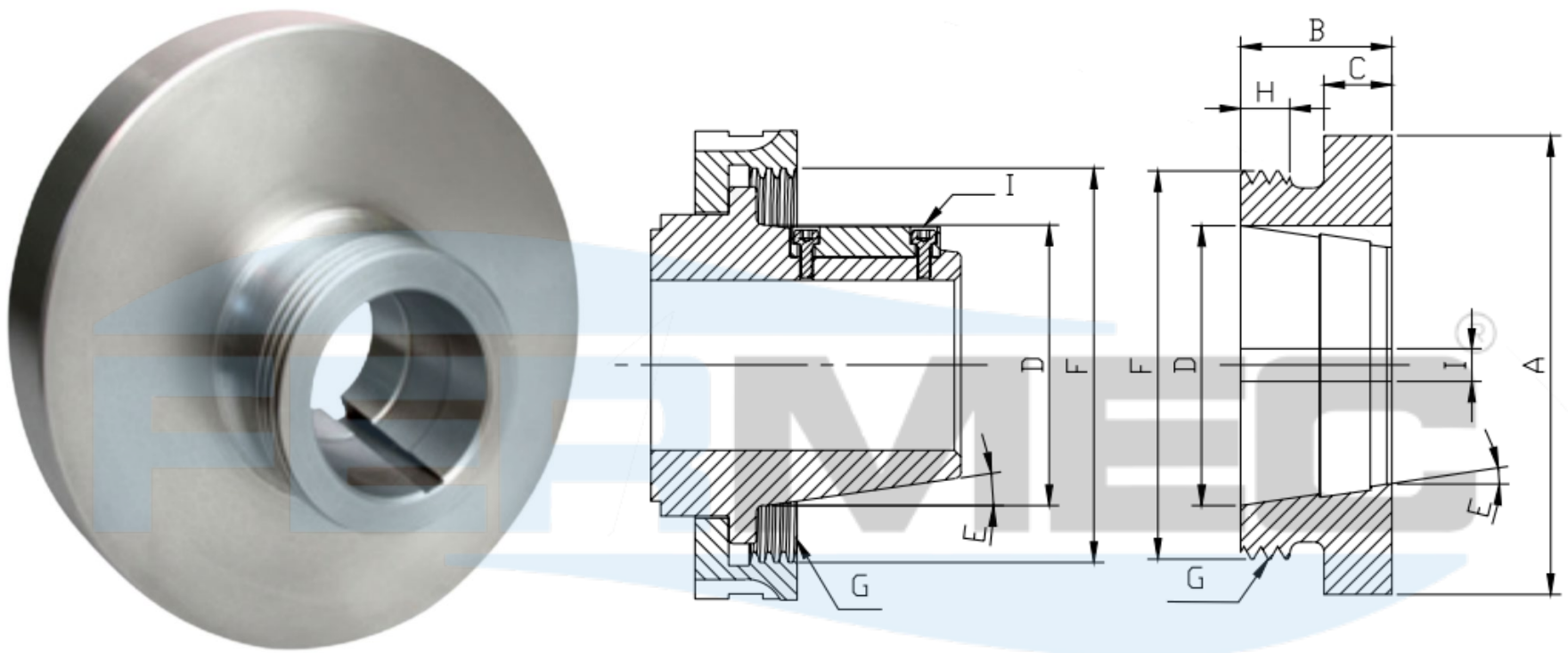
FLANGE CONE CURTO - ASA B - 5.9



Código	Cone	A Ø	B	D	F*	G	H
FCC-160	3	160	25	50	53,975	7° 7' 30"	35,331
FCC-210	3	210	25	50	53,975	7° 7' 30"	35,331
FCC-160	4	160	25	60	63,512	7° 7' 30"	41,275
FCC-210	4	210	25	60	63,512	7° 7' 30"	41,275
FCC-190	5	190	25	79	82,577	7° 7' 30"	52,387
FCC-210	5	210	25	79	82,577	7° 7' 30"	52,387
FCC-210	6	210	25	80	106,375	7° 7' 30"	66,675
FCC-255	6	255	30	80	106,375	7° 7' 30"	66,675
FCC-320	6	320	35	80	106,375	7° 7' 30"	66,675
FCC-400	6	400	36	80	106,375	7° 7' 30"	66,675
FCC-460	6	460	40	80	106,375	7° 7' 30"	66,675
FCC-255	8	255	30	80	139,713	7° 7' 30"	82,725
FCC-320	8	320	35	80	139,713	7° 7' 30"	82,725
FCC-400	8	400	36	80	139,713	7° 7' 30"	82,725
FCC-460	8	460	40	80	139,713	7° 7' 30"	82,725
FCC-530	8	530	40	80	139,713	7° 7' 30"	82,725
FCC-320	11	320	35	100	196,863	7° 7' 30"	117,475
FCC-400	11	400	36	100	196,863	7° 7' 30"	117,475
FCC-460	11	460	50	100	196,863	7° 7' 30"	117,475
FCC-530	11	530	50	100	196,863	7° 7' 30"	117,475
FCC-400	15	400	40	120	285,762	7° 7' 30"	165,100
FCC-460	15	460	50	120	285,762	7° 7' 30"	165,100
FCC-530	15	530	50	120	285,762	7° 7' 30"	165,100
FCC-650	15	650	60	120	285,762	7° 7' 30"	165,100
FCC-750	15	750	60	120	285,762	7° 7' 30"	165,100
FCC-530	20	530	50	130	412,762	7° 7' 30"	231,775
FCC-650	20	650	60	130	412,762	7° 7' 30"	231,775
FCC-750	20	750	60	130	412,762	7° 7' 30"	231,775

* Ø maior cone

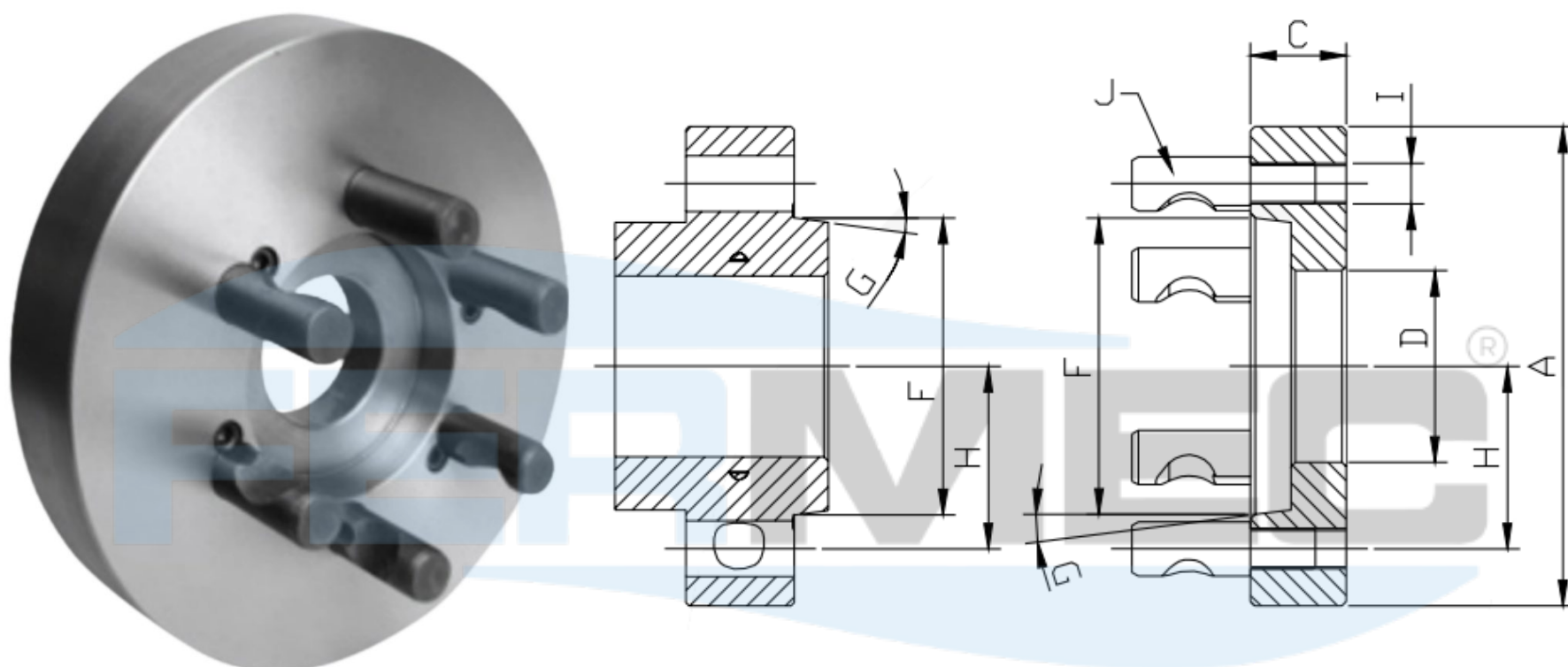
FLANGE CONE LONGO - ASA B - 5.9



Código	Cone	A Ø	B	C	D	E	F*	G	H	I
FCL-160	L00	160	54	22	69,85	8°17'50"	95,12	6F.P.P.	14	9,57
FCL-190	L00	190	54	25	69,85	8°17'50"	95,12	6F.P.P.	14	9,57
FCL-210	L00	210	54	25	69,85	8°17'50"	95,12	6F.P.P.	14	9,57
FCL-255	L00	255	54	28	69,85	8°17'50"	95,12	6F.P.P.	14	9,57
FCL-190	L0	190	63,5	25	82,55	8°17'50"	114,17	6F.P.P.	12	9,57
FCL-210	L0	210	63,5	25	82,55	8°17'50"	114,17	6F.P.P.	12	9,57
FCL-255	L0	255	63,5	28	82,55	8°17'50"	114,17	6F.P.P.	12	9,57
FCL-320	L0	320	63,5	32	82,55	8°17'50"	114,17	6F.P.P.	12	9,57
FCL-400	L0	400	63,5	36	82,55	8°17'50"	114,17	6F.P.P.	12	9,57
FCL-255	L1	255	76,2	28	104,77	8°17'50"	152,27	6F.P.P.	16	15,92
FCL-320	L1	320	76,2	32	104,77	8°17'50"	152,27	6F.P.P.	16	15,92
FCL-400	L1	400	76,2	36	104,77	8°17'50"	152,27	6F.P.P.	16	15,92
FCL-460	L1	460	76,2	40	104,77	8°17'50"	152,27	6F.P.P.	16	15,92
FCL-400	L2	400	89	36	133,35	8°17'50"	196,72	5F.P.P.	22	19,1
FCL-460	L2	460	89	40	133,35	8°17'50"	196,72	5F.P.P.	22	19,1
FCL-530	L2	530	89	40	133,35	8°17'50"	196,72	5F.P.P.	22	19,1
FCL-650	L2	650	89	50	133,35	8°17'50"	196,72	5F.P.P.	22	19,1
FCL-530	L3	530	102	40	165,1	8°17'50"	263,39	4F.P.P.	24	25,45
FCL-650	L3	650	102	50	165,1	8°17'50"	263,39	4F.P.P.	24	25,45
FCL-750	L3	750	102	60	165,1	8°17'50"	263,39	4F.P.P.	24	25,45
FCL-255-E	Especial	255	76,2	28	101	8°17'50"	127	6F.P.P.	16	15,92
FCL-320-E		320	76,2	32	101	8°17'50"	127	6F.P.P.	16	15,92
FCL-400-E		400	76,2	36	101	8°17'50"	127	6F.P.P.	16	15,92
FCL-460-E		460	76,2	40	101	8°17'50"	127	6F.P.P.	16	15,92

* Ø sobre a rosca

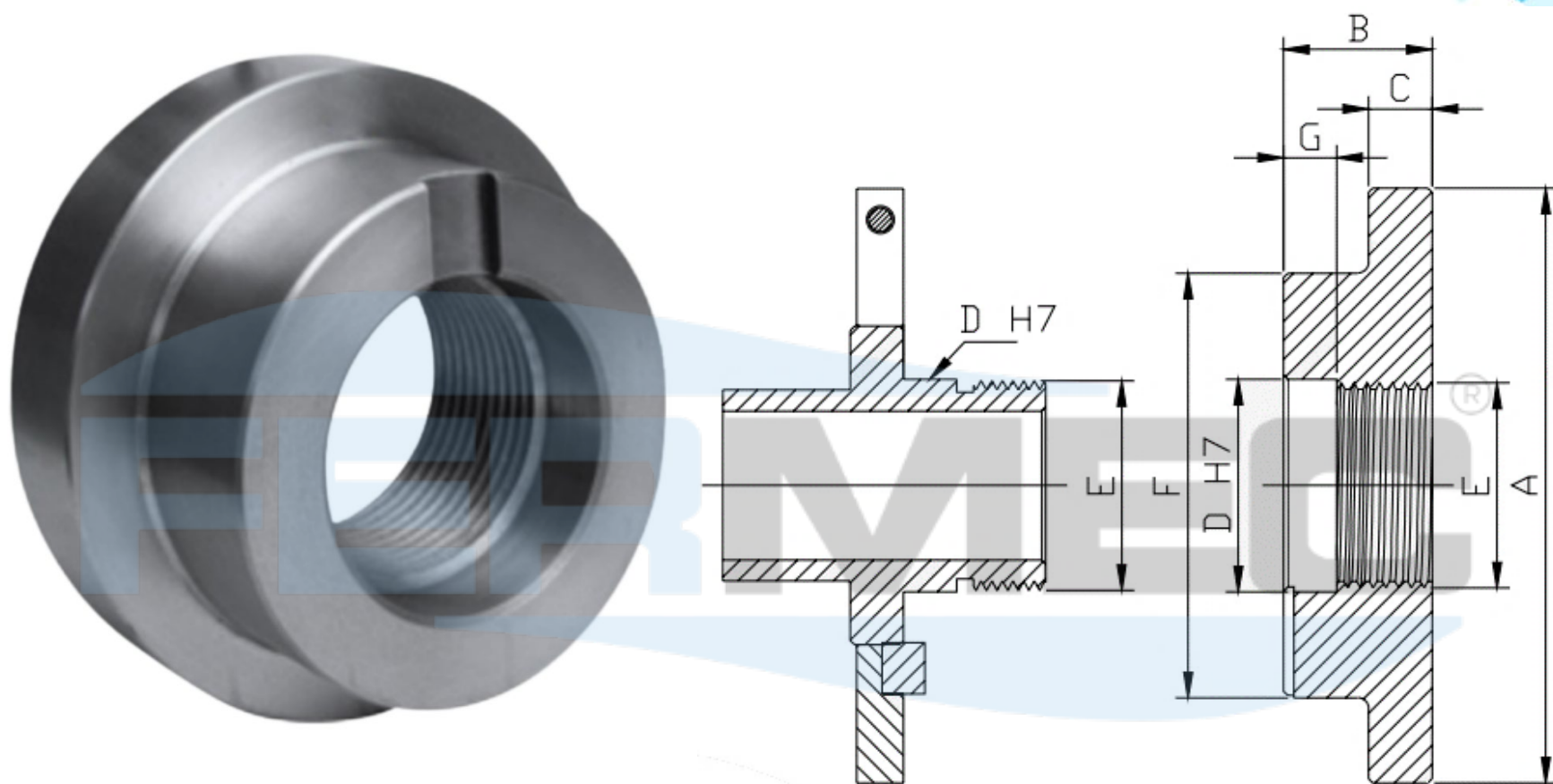
FLANGE CAMLOCK - ASA B - 5.9



Código	Cone	A Ø	C	D	F	G	H	I	J*
FC-160	3	160	36	50	53,975	7°7'30"	35,331	7/16 x 20	3
FC-210	3	210	36	50	53,975	7°7'30"	35,331	7/16 x 20	3
FC-160	4	160	36	60	63,512	7°7'30"	41,275	7/16 x 20	3
FC-210	4	210	36	60	63,512	7°7'30"	41,275	7/16 x 20	3
FC-190	5	190	36	79	82,577	7°7'30"	52,387	1/2 x 20	6
FC-210	5	210	36	79	82,577	7°7'30"	52,387	1/2 x 20	6
FC-210	6	210	36	101	106,375	7°7'30"	66,675	5/8 x 18	6
FC-255	6	255	40	101	106,375	7°7'30"	66,675	5/8 x 18	6
FC-320	6	320	45	101	106,375	7°7'30"	66,675	5/8 x 18	6
FC-400	6	400	50	101	106,375	7°7'30"	66,675	5/8 x 18	6
FC-460	6	460	50	101	106,375	7°7'30"	66,675	5/8 x 18	6
FC-255	8	255	40	135	139,713	7°7'30"	85,725	3/4 x 16	6
FC-320	8	320	45	135	139,713	7°7'30"	85,725	3/4 x 16	6
FC-400	8	400	50	135	139,713	7°7'30"	85,725	3/4 x 16	6
FC-460	8	460	50	135	139,713	7°7'30"	85,725	3/4 x 16	6
FC-530	8	530	50	135	139,713	7°7'30"	85,725	3/4 x 16	6
FC-320	11	320	45	192	196,863	7°7'30"	117,475	7/8 x 14	6
FC-400	11	400	50	192	196,863	7°7'30"	117,475	7/8 x 14	6
FC-460	11	460	50	192	196,863	7°7'30"	117,475	7/8 x 14	6
FC-530	11	530	50	192	196,863	7°7'30"	117,475	7/8 x 14	6
FC-400	15	400	50	281	285,762	7°7'30"	165,1	1" x 14	6
FC-460	15	460	50	281	285,762	7°7'30"	165,1	1" x 14	6
FC-530	15	530	50	281	285,762	7°7'30"	165,1	1" x 14	6
FC-650	15	650	60	281	285,762	7°7'30"	165,1	1" x 14	6
FC-750	15	750	60	281	285,762	7°7'30"	165,1	1" x 14	6
FC-530	20	530	50	407	412,762	7°7'30"	231,775	1"1/8 x 12	6
FC-650	20	650	60	407	412,762	7°7'30"	231,775	1"1/8 x 12	6
FC-750	20	750	60	407	412,762	7°7'30"	231,775	1"1/8 x 12	6

*Quantidade de pinos.

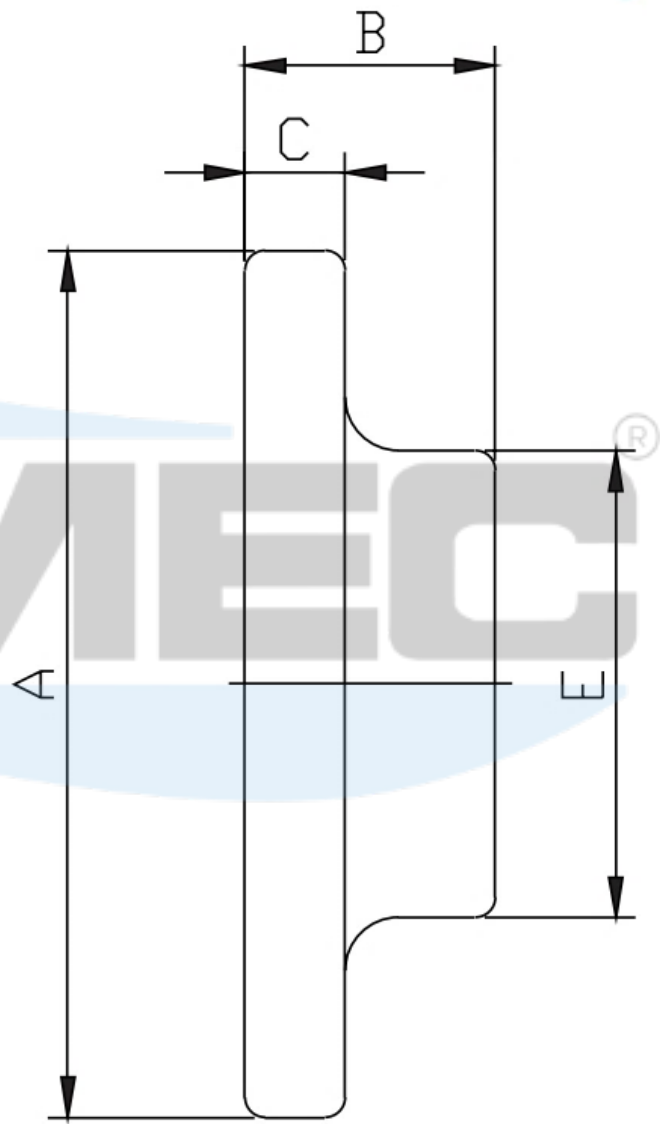
FLANGE PROMECA IM 500 / PROMECA IL 1100



Código	PROMECA IM 500						
	A Ø	B	C	D (H7)	E	F	G
FP-IM-255	255	70	30	100+0,01	M100x6	160	25
FP-IM-315	315	70	36	-0	M100x6	160	25
FP-IM-400	400	70	36	-0	M100x6	160	25
FP-IM-460	460	70	40	-0	M100x6	160	25
FP-IM-530	530	70	40	-0	M100x6	160	25
FP-IM-650	650	80	50	-0	M100x6	160	25

Código	PROMECA IL 1100						
	A Ø	B	C	D (H7)	E	F	G
FP-IL-255	255	85	36	125+0,01	M125x6	195	30
FP-IL-315	315	85	36	-0	M125x6	195	30
FP-IL-400	400	85	40	-0	M125x6	195	30
FP-IL-460	460	85	40	-0	M125x6	195	30
FP-IL-530	530	90	50	-0	M125x6	195	30
FP-IL-650	650	90	50	-0	M125x6	195	30

FLANGE BRUTA



Código	A Ø	B	C	E
FB-160	166	60	22	95
FB-210	216	70	24	95
FB-255	261	90	27	110
FB-320	326	90	30	160



FERMEC[®]

SHARPCUT[®]
TECHNOLOGIES

ENDEREÇO: Rua Rio Verde, 1829 - Vila Palmeiras - São Paulo/SP

CEP:02934-401

TELEFONE:+55 (11) 3978-5515

E-MAIL:fermec@fermec.com.br

SITE: WWW.FERMEC.COM.BR