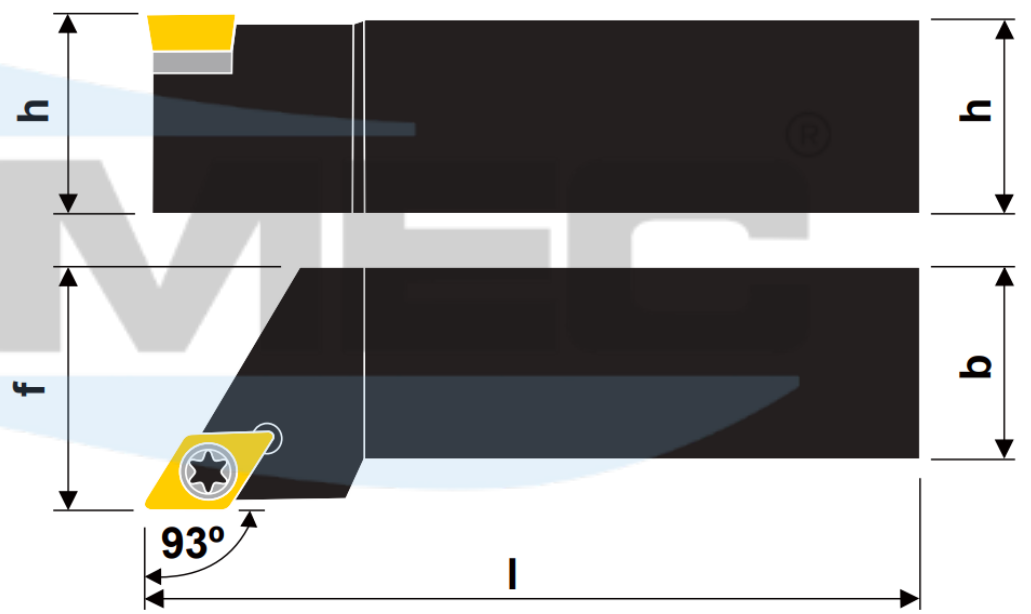
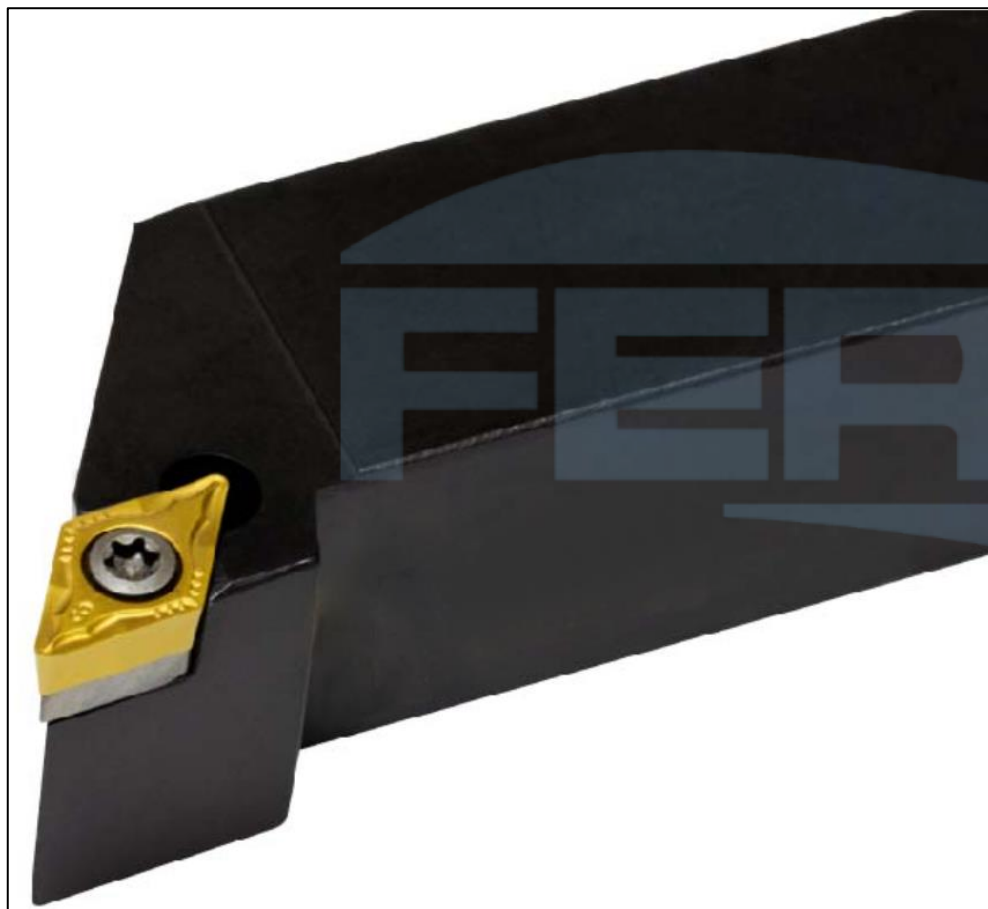

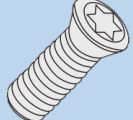
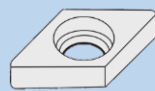

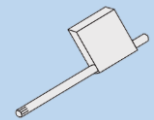


SISTEMA DE FIXAÇÃO POR PARAFUSO TORX

SDJCR

Suporte para torneiar e facear 93° com pastilha positiva 55°



| Produtos | Dimensões (mm) | | | | Pastilha  | Acessórios | | | |
|--------------------|----------------|----|-----|----|--|---|---|---|--|
| | h | b | l | f | |  Parafuso Torx |  Calço |  Parafuso do Calço |  Chave Torx/Allen |
| SDJCR/L 0808 F07 | 08 | 08 | 80 | 10 | DC_0702 | 5513 020-03 | - | - | T7-B |
| SDJCR/L 1010 E07 | 10 | 10 | 70 | 12 | | | | | |
| SDJCR/L 1212 F07 | 12 | 12 | 80 | 16 | | | | | |
| SDJCR/L 1616 H07 | 16 | 16 | 100 | 20 | | | | | |
| SDJCR/L 2020 K07 | 20 | 20 | 125 | 25 | | | | | |
| SDJCR/L 0808 K07-S | 08 | 08 | 125 | 08 | | | | | |
| SDJCR/L 1010 K07-S | 10 | 10 | 125 | 10 | | | | | |
| SDJCR/L 1212 K07-S | 12 | 12 | 125 | 12 | | | | | |
| SDJCR/L 1616 K07-S | 16 | 16 | 125 | 16 | | | | | |
| SDJCR/L 1212 F11 | 12 | 12 | 80 | 16 | DC_11T3 | 5513 020-10 | - | - | T15-B |
| SDJCR/L 1616 H11 | 16 | 16 | 100 | 20 | | 5513 020-01 | 5322 263-01 | 5512 090-01 | T15-B C - 9/64 |
| SDJCR/L 2020 K11 | 20 | 20 | 125 | 25 | | | | | |
| SDJCR/L 2525 M11 | 25 | 25 | 150 | 32 | | | | | |
| SDJCR/L 1212 K11-S | 12 | 12 | 125 | 12 | | | | | |
| SDJCR/L 1616 K11-S | 16 | 16 | 125 | 16 | | | | | |